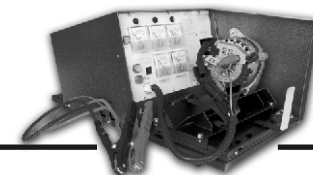




881 Alternator and Starter Test Bench

Test Leads



BAD DIODE LIGHT



CHARGE LIGHT



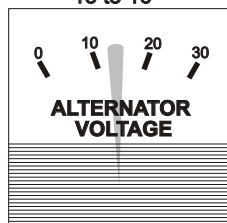
AUXILIARY LIGHT



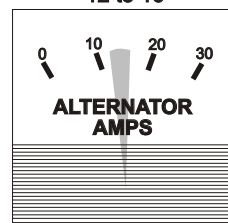
MILLIAMPERE METER
6 or less



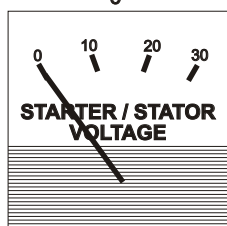
ALTERNATOR VOLTAGE
13 to 16



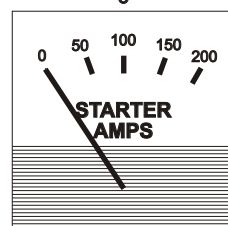
ALTERNATOR AMPERAGE
12 to 16



STARTER VOLTAGE
STATOR VOLTAGE
0



STARTER AMPERAGE
0



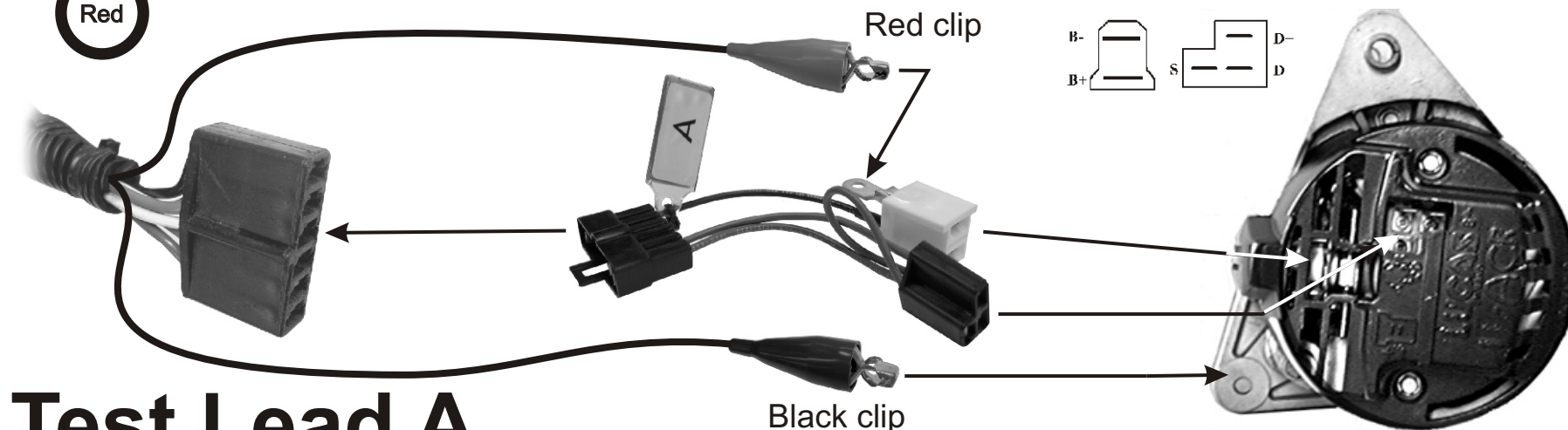
Blue

Green

Red

Many alternators use the same plug with different wiring. Please refer to test lead chart for the correct test lead requirements!

1. Readings for a good alternator are in the shaded area. All meter readings are $\pm 5\%$.
2. Insert lead as shown below and slide alternator onto alternator holder pin.
3. Install the belt on to the alternator pulley. Make sure the belt is under the motor pulley belt retaining clip. Slide the green handle to the right, locking the handle into the retaining tab and close the belt guard. Make sure to keep your fingers and clothing free of the pulley and belt.
4. Turn on motor switch. The charge light on the panel should be lit. If not, check and reset the circuit breaker on the front panel.
5. Press the GREEN test button **MOMENTARILY** and **RELEASE** (hold for no more than 3 seconds). Observe meters for proper readings.

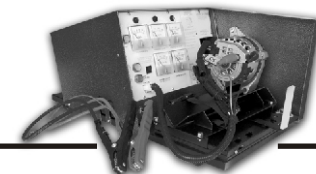


Test Lead A



881 Alternator and Starter Test Bench

Test Leads



BAD DIODE LIGHT



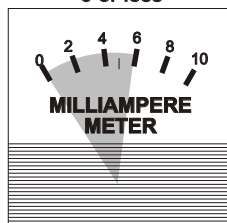
CHARGE LIGHT



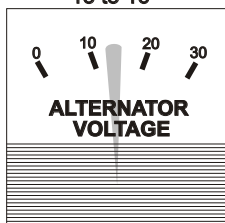
AUXILIARY LIGHT



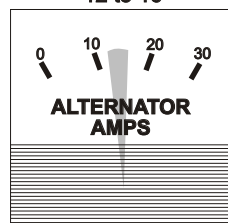
MILLIAMPERE METER
6 or less



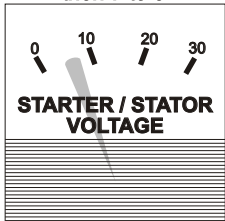
ALTERNATOR VOLTAGE
13 to 16



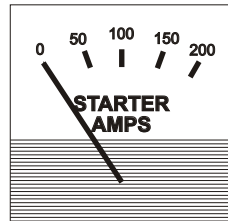
ALTERNATOR AMPERAGE
12 to 16



STARTER VOLTAGE
STATOR VOLTAGE
0, unless W connected
then 7 to 8



STARTER AMPERAGE
0



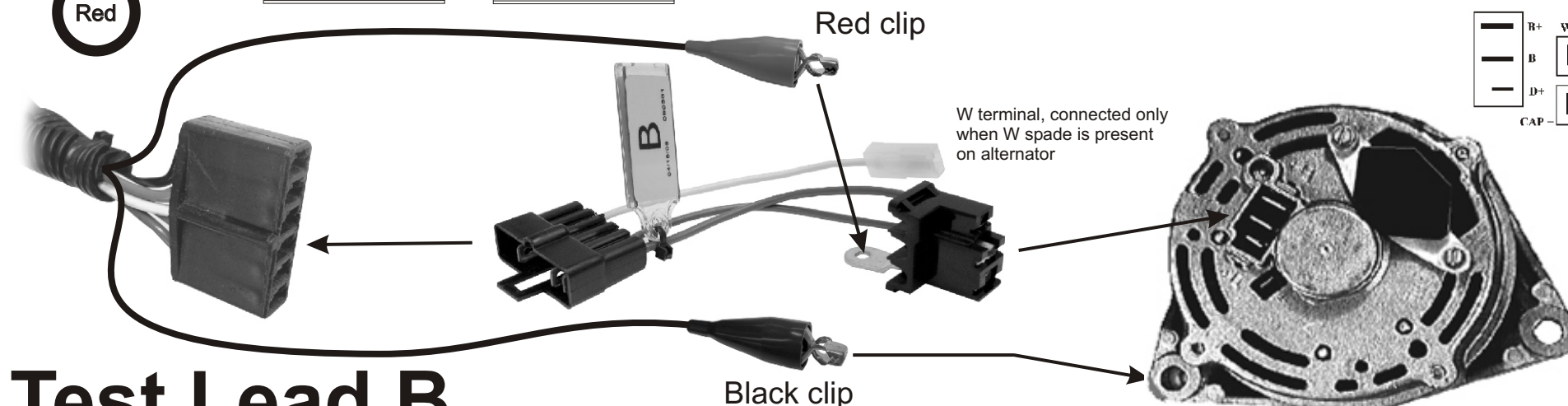
Blue

Green

Red

Many alternators use the same plug with different wiring. Please refer to test lead chart for the correct test lead requirements!

1. Readings for a good alternator are in the shaded area. All meter readings are $\pm 5\%$.
2. Insert lead as shown below and slide alternator onto alternator holder pin.
3. Install the belt making sure it is under the belt retaining clip. Slide the green handle to the right, locking handle into retaining tab and close the belt guard. Make sure to keep your fingers and clothing free of the pulley and belt.
4. Turn on motor switch. The charge light on the panel should be lit. If not, check and reset the circuit breaker on the front panel.
5. Press the GREEN test button **MOMENTARILY** and **RELEASE**. Observe meters for proper readings. Hold for no more than 3 seconds.

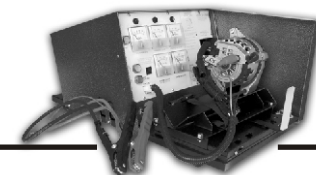


Test Lead B



881 Alternator and Starter Test Bench

Test Leads



BAD DIODE LIGHT



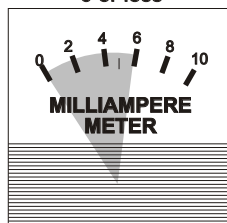
CHARGE LIGHT



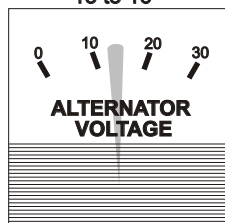
AUXILIARY LIGHT



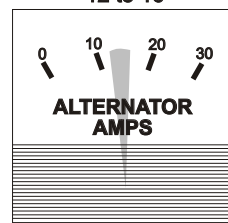
MILLIAMPERE METER
6 or less



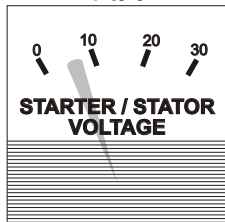
ALTERNATOR VOLTAGE
13 to 16



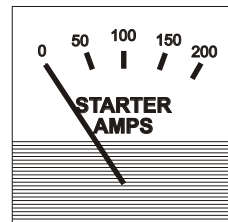
ALTERNATOR AMPERAGE
12 to 16



STARTER VOLTAGE
STATOR VOLTAGE
7 to 8



STARTER AMPERAGE
0



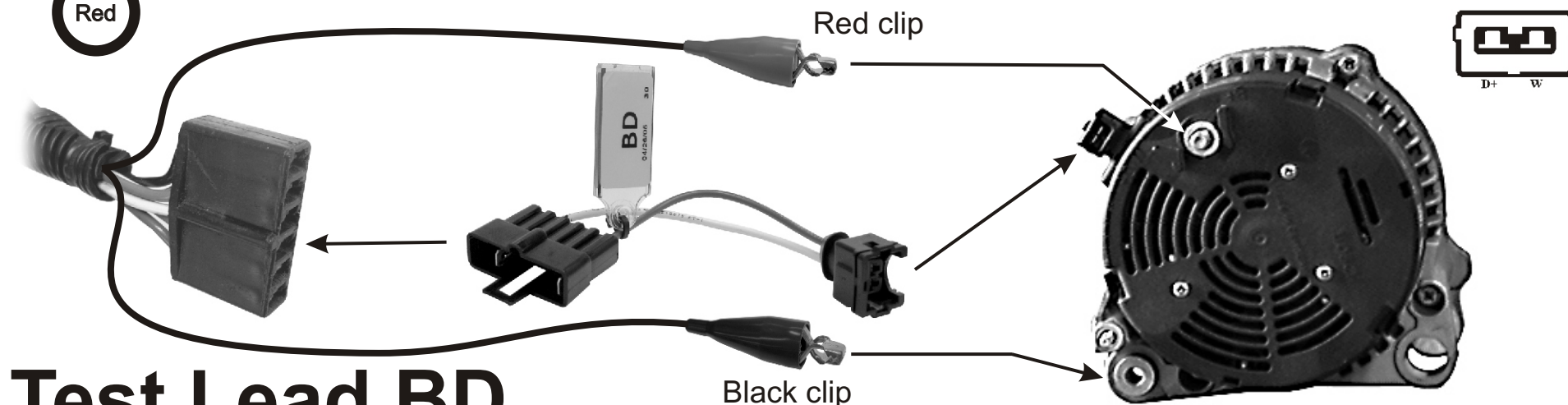
Blue

Green

Red

Many alternators use the same plug with different wiring. Please refer to test lead chart for the correct test lead requirements!

1. Readings for a good alternator are in the shaded area. All meter readings are $\pm 5\%$.
2. Insert lead as shown below and slide alternator onto alternator holder pin.
3. Install the belt making sure it is under the belt retaining clip. Slide the green handle to the right, locking handle into retaining tab and close the belt guard. Make sure to keep your fingers and clothing free of the pulley and belt.
4. Turn on motor switch. The charge light on the panel should be lit. If not, check and reset the circuit breaker on the front panel.
5. Press the GREEN test button **MOMENTARILY** and **RELEASE**. Observe meters for proper readings. Hold for no more than 3 seconds.

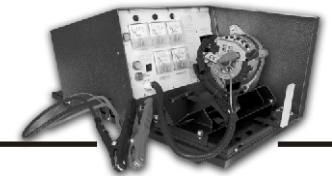


Test Lead BD



881 Alternator and Starter Test Bench

Test Leads



BAD DIODE LIGHT



CHARGE LIGHT



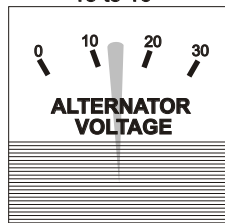
AUXILIARY LIGHT



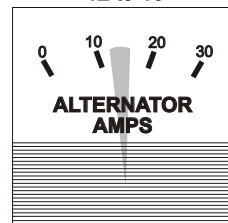
MILLIAMPERE METER
6 or less



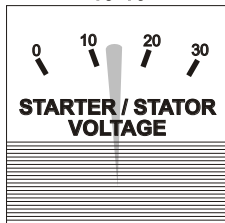
ALTERNATOR VOLTAGE
13 to 16



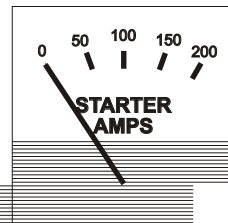
ALTERNATOR AMPERAGE
12 to 16



STARTER VOLTAGE
STATOR VOLTAGE
13-16



STARTER AMPERAGE
0



Blue

Green

Red

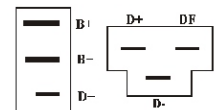
Many alternators use the same plug with different wiring. Please refer to test lead chart for the correct test lead requirements!

1. Readings for a good alternator are in the shaded area. All meter readings are $\pm 5\%$.
2. Insert lead as shown below and slide alternator onto alternator holder pin.
3. Install the belt making sure it is under the belt retaining clip. Slide the green handle to the right, locking handle into retaining tab and close the belt guard. Make sure to keep your fingers and clothing free of the pulley and belt.
4. Turn on motor switch. The charge light on the panel should be lit. If not, check and reset the circuit breaker on the front panel.
5. Press the GREEN test button. While pressing button, observe meters for proper readings. Hold for no more than 10 seconds.

Red clip

If battery post is not available, connect here

Black clip



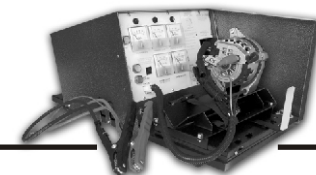
Test Lead BM

**EXTERNALLY
REGULATED**



881 Alternator and Starter Test Bench

Test Leads



BAD DIODE LIGHT



CHARGE LIGHT



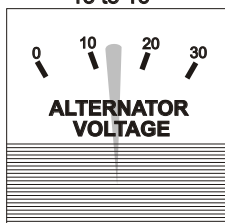
AUXILIARY LIGHT



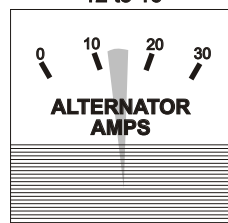
MILLIAMPERE METER
6 or less



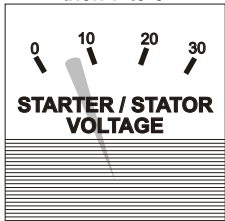
ALTERNATOR VOLTAGE
13 to 16



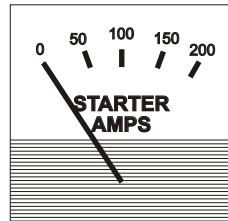
ALTERNATOR AMPERAGE
12 to 16



STARTER VOLTAGE
STATOR VOLTAGE
0, unless W connected
then 7 to 8



STARTER AMPERAGE
0



Many alternators use the same plug with different wiring. Please refer to test lead chart for the correct test lead requirements!

1. Readings for a good alternator are in the shaded area. All meter readings are $\pm 5\%$.
2. Insert lead as shown below and slide alternator onto alternator holder pin.
3. Install the belt making sure it is under the belt retaining clip. Slide the green handle to the right, locking handle into retaining tab and close the belt guard. Make sure to keep your fingers and clothing free of the pulley and belt.
4. Turn on motor switch. The charge light on the panel should be lit. If not, check and reset the circuit breaker on the front panel.
5. Press the GREEN test button **MOMENTARILY** and **RELEASE**. Observe meters for proper readings. Hold for no more than 3 seconds.

Blue

Green

Red



Red clip

W terminal, connected only
when W spade is present
on alternator

—	R+	W
—	B	
—	D+	
—	CAP	—

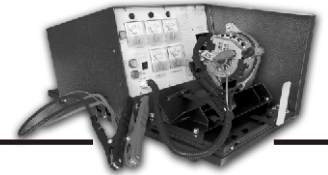
Black clip

Test Lead BT



881 Alternator and Starter Test Bench

Test Leads



BAD DIODE LIGHT



CHARGE LIGHT



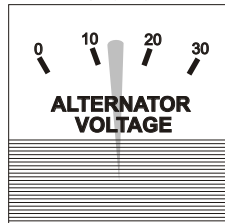
AUXILIARY LIGHT



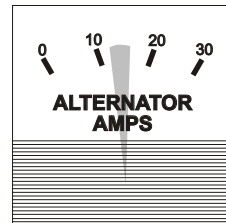
MILLIAMPERE METER
6 or less



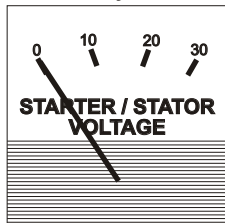
ALTERNATOR VOLTAGE
13 to 16



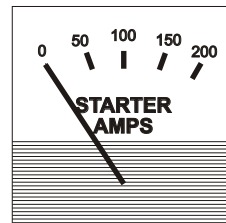
ALTERNATOR AMPERAGE
12 to 16



STARTER VOLTAGE
STATOR VOLTAGE
0



STARTER AMPERAGE
0



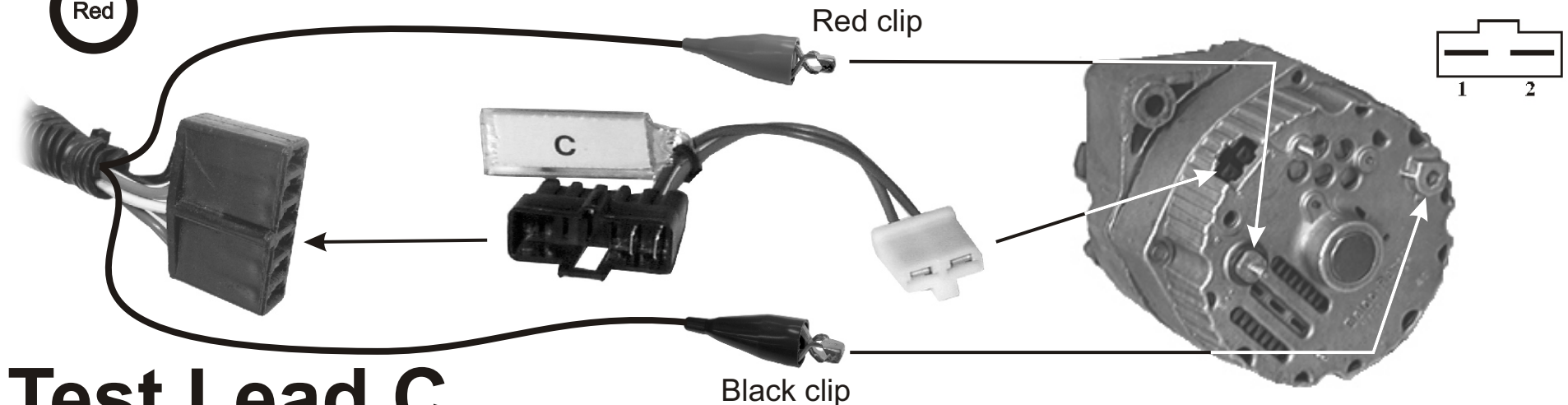
Blue

Green

Red

Many alternators use the same plug with different wiring. Please refer to test lead chart for the correct test lead requirements!

1. Readings for a good alternator are in the shaded area. All meter readings are $\pm 5\%$.
2. Insert lead as shown below and slide alternator onto alternator holder pin.
3. Install the belt making sure it is under the belt retaining clip. Slide the green handle to the right, locking handle into retaining tab and close the belt guard. Make sure to keep your fingers and clothing free of the pulley and belt.
4. Turn on motor switch. The charge light on the panel should be lit. If not, check and reset the circuit breaker on the front panel.
5. Press the GREEN test button **MOMENTARILY** and **RELEASE**. Observe meters for proper readings. Hold for no more than 3 seconds.

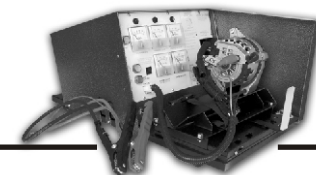


Test Lead C



881 Alternator and Starter Test Bench

Test Leads



BAD DIODE LIGHT



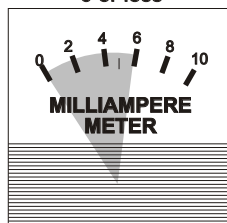
CHARGE LIGHT



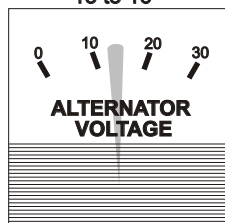
AUXILIARY LIGHT



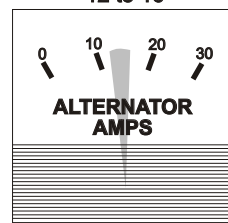
MILLIAMPERE METER
6 or less



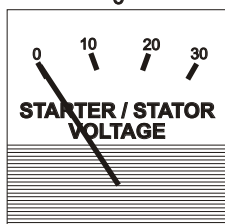
ALTERNATOR VOLTAGE
13 to 16



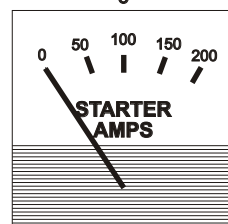
ALTERNATOR AMPERAGE
12 to 16



STARTER VOLTAGE
STATOR VOLTAGE
0



STARTER AMPERAGE
0



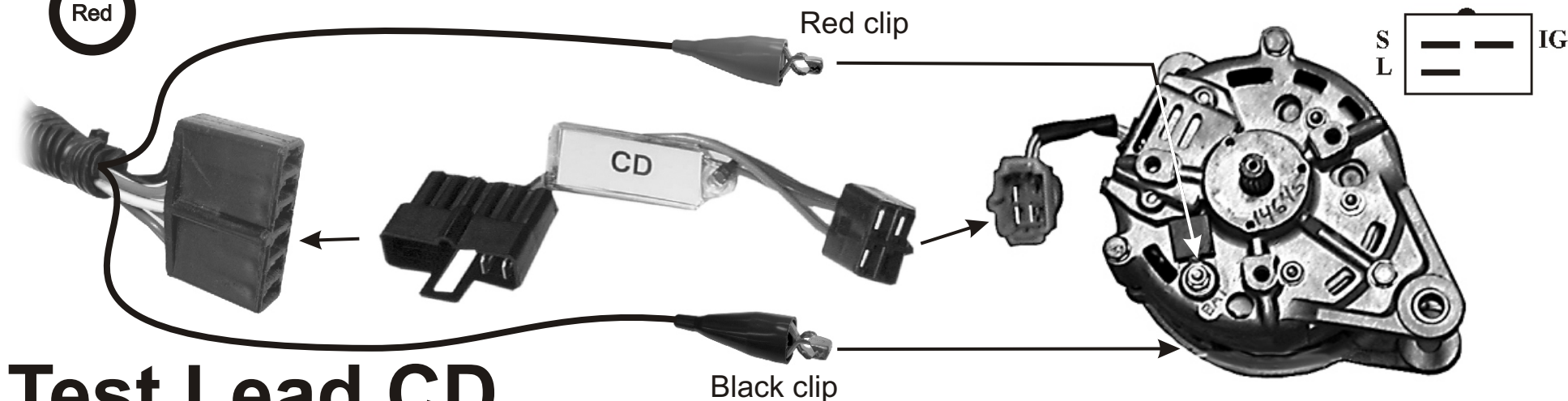
Blue

Green

Red

Many alternators use the same plug with different wiring. Please refer to test lead chart for the correct test lead requirements!

1. Readings for a good alternator are in the shaded area. All meter readings are $\pm 5\%$.
2. Insert lead as shown below and slide alternator onto alternator holder pin.
3. Install the belt making sure it is under the belt retaining clip. Slide the green handle to the right, locking handle into retaining tab and close the belt guard. Make sure to keep your fingers and clothing free of the pulley and belt.
4. Turn on motor switch. The charge light on the panel should be lit. If not, check and reset the circuit breaker on the front panel.
5. Press the GREEN test button **MOMENTARILY** and **RELEASE**. Observe meters for proper readings. Hold for no more than 3 seconds.

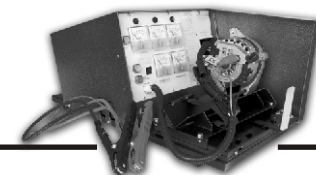


Test Lead CD



881 Alternator and Starter Test Bench

Test Leads



BAD DIODE LIGHT



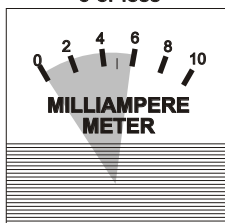
CHARGE LIGHT



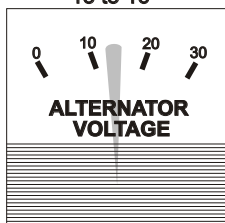
AUXILIARY LIGHT



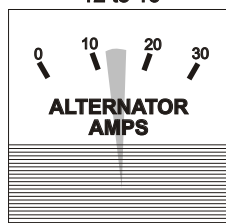
MILLIAMPERE METER
6 or less



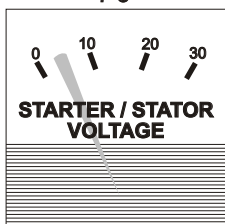
ALTERNATOR VOLTAGE
13 to 16



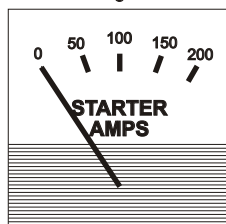
ALTERNATOR AMPERAGE
12 to 16



STARTER VOLTAGE
STATOR VOLTAGE
7-8



STARTER AMPERAGE
0



Blue

Green

Red

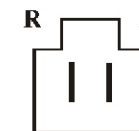


Many alternators use the same plug with different wiring. Please refer to test lead chart for the correct test lead requirements!

1. Readings for a good alternator are in the shaded area. All meter readings are $\pm 5\%$.
2. Insert lead as shown below and slide alternator onto alternator holder pin.
3. Install the belt making sure it is under the belt retaining clip. Slide the green handle to the right, locking handle into retaining tab and close the belt guard. Make sure to keep your fingers and clothing free of the pulley and belt.
4. Turn on motor switch. The charge light on the panel should be lit. If not, check and reset the circuit breaker on the front panel.
5. Press the GREEN test button. While pressing button, observe meters for proper readings. Hold for no more than 10 seconds.

Red clip

Black clip



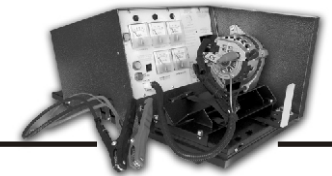
**EXTERNALLY
REGULATED**

Test Lead D



881 Alternator and Starter Test Bench

Test Leads



BAD DIODE LIGHT



CHARGE LIGHT



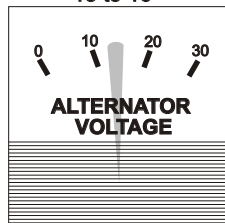
AUXILIARY LIGHT



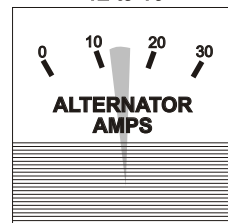
MILLIAMPERE METER
6 or less



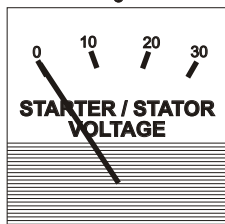
ALTERNATOR VOLTAGE
13 to 16



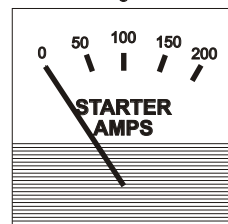
ALTERNATOR AMPERAGE
12 to 16



STARTER VOLTAGE
STATOR VOLTAGE
0



STARTER AMPERAGE
0



Blue

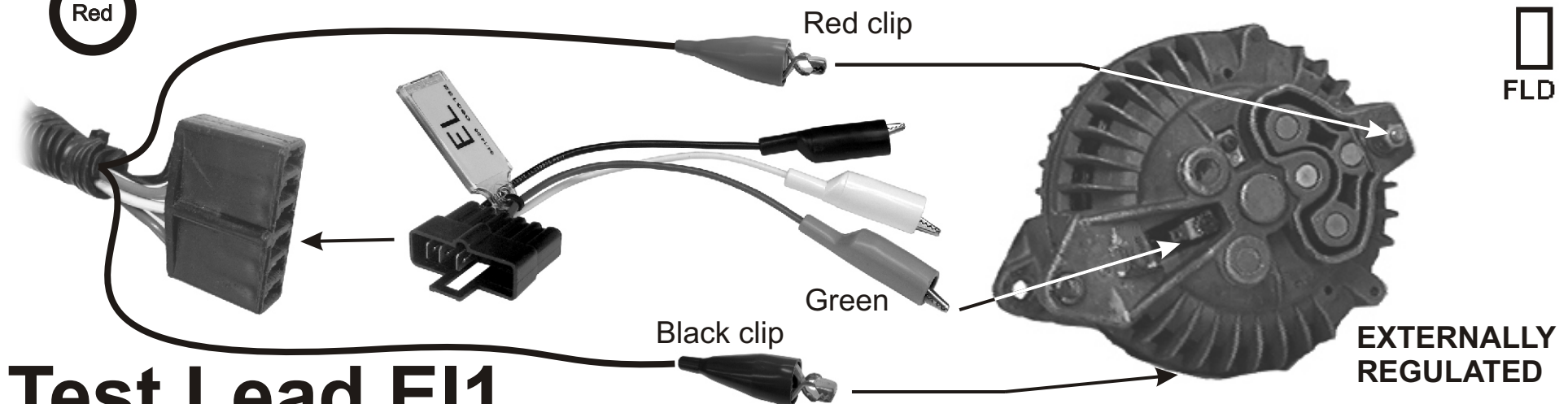
Green

Red



Many alternators use the same plug with different wiring. Please refer to test lead chart for the correct test lead requirements!

1. Readings for a good alternator are in the shaded area. All meter readings are $\pm 5\%$.
2. Insert lead as shown below and slide alternator onto alternator holder pin.
3. Install the belt making sure it is under the belt retaining clip. Slide the green handle to the right, locking handle into retaining tab and close the belt guard. Make sure to keep your fingers and clothing free of the pulley and belt.
4. Turn on motor switch. The charge light on the panel should be lit. If not, check and reset the circuit breaker on the front panel.
5. Press the GREEN test button. While pressing button, observe meters for proper readings. Hold for no more than 10 seconds.

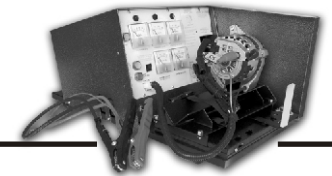


Test Lead EI1



881 Alternator and Starter Test Bench

Test Leads



BAD DIODE LIGHT



CHARGE LIGHT



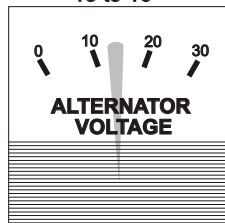
AUXILIARY LIGHT



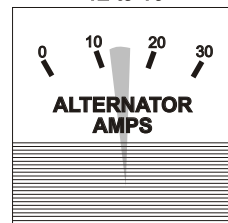
MILLIAMPERE METER
6 or less



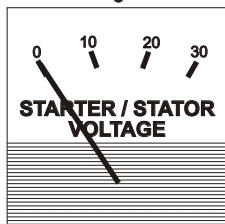
ALTERNATOR VOLTAGE
13 to 16



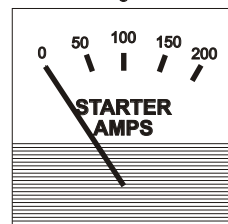
ALTERNATOR AMPERAGE
12 to 16



STARTER VOLTAGE
STATOR VOLTAGE
0



STARTER AMPERAGE
0



Blue

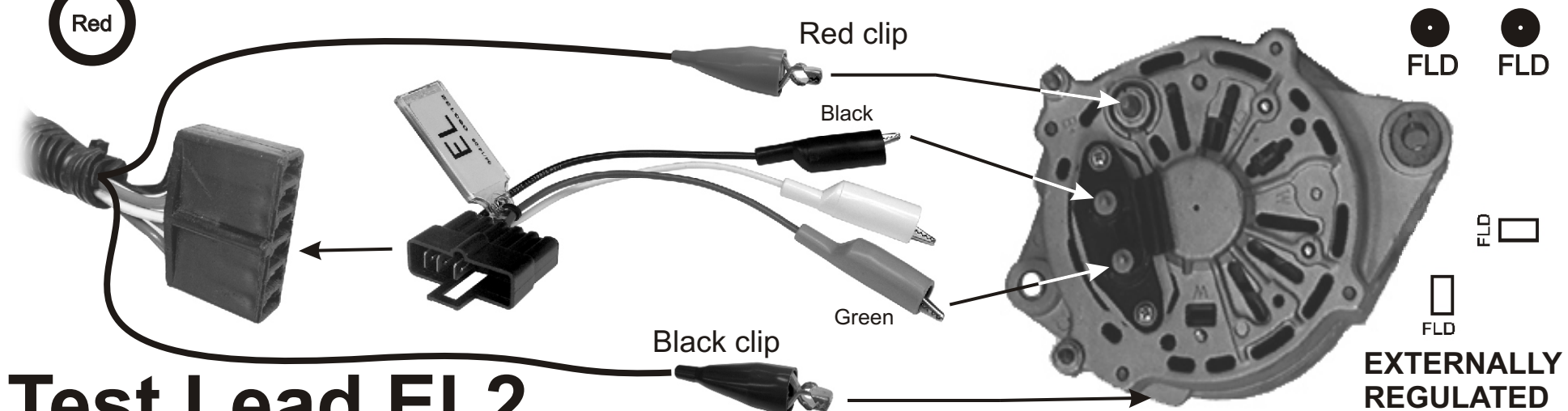
Green

Red



Many alternators use the same plug with different wiring. Please refer to test lead chart for the correct test lead requirements!

1. Readings for a good alternator are in the shaded area. All meter readings are $\pm 5\%$.
2. Insert lead as shown below and slide alternator onto alternator holder pin.
3. Install the belt making sure it is under the belt retaining clip. Slide the green handle to the right, locking handle into retaining tab and close the belt guard. Make sure to keep your fingers and clothing free of the pulley and belt.
4. Turn on motor switch. The charge light on the panel should be lit. If not, check and reset the circuit breaker on the front panel.
5. Press the GREEN test button. While pressing button, observe meters for proper readings. Hold for no more than 10 seconds.
6. Reverse the BLACK and GREEN test lead wires and retest.



Test Lead EL2

FLD FLD

FLD

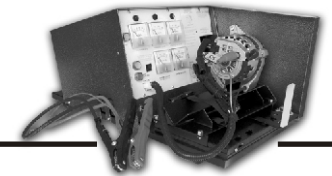
FLD

**EXTERNALLY
REGULATED**



881 Alternator and Starter Test Bench

Test Leads



BAD DIODE LIGHT



CHARGE LIGHT



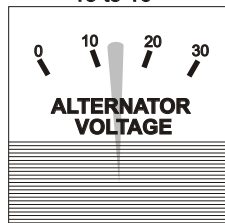
AUXILIARY LIGHT



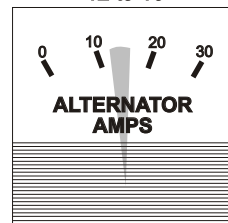
MILLIAMPERE METER
6 or less



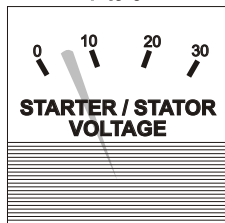
ALTERNATOR VOLTAGE
13 to 16



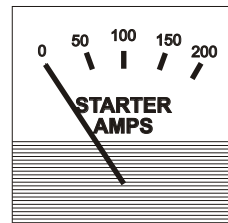
ALTERNATOR AMPERAGE
12 to 16



STARTER VOLTAGE
STATOR VOLTAGE
7 to 8



STARTER AMPERAGE
0



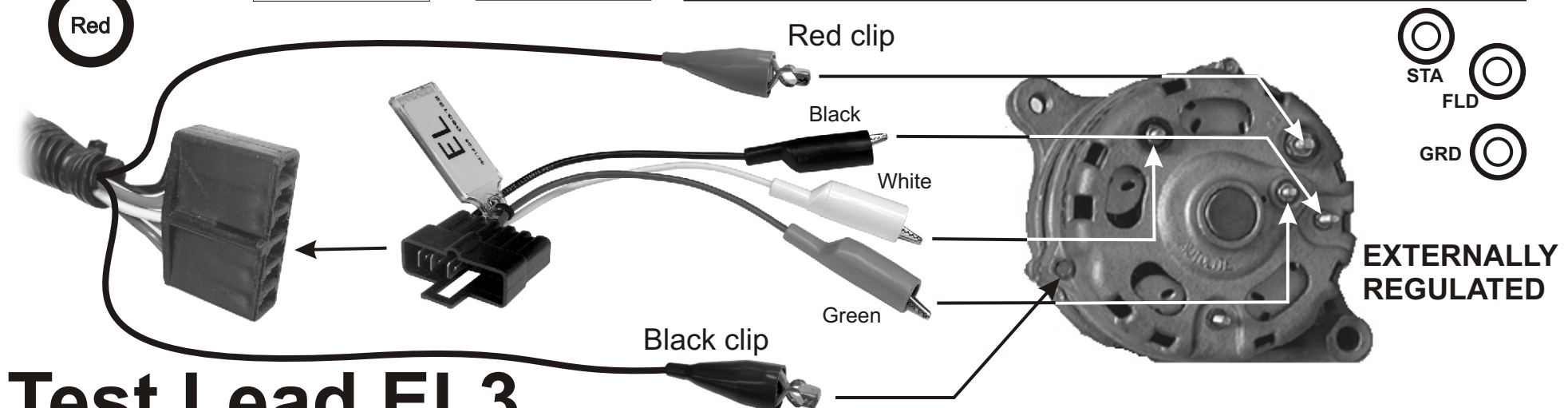
Blue

Green

Red

Many alternators use the same plug with different wiring. Please refer to test lead chart for the correct test lead requirements!

1. Readings for a good alternator are in the shaded area. All meter readings are $\pm 5\%$.
2. Insert lead as shown below and slide alternator onto alternator holder pin.
3. Install the belt making sure it is under the belt retaining clip. Slide the green handle to the right, locking handle into retaining tab and close the belt guard. Make sure to keep your fingers and clothing free of the pulley and belt.
4. Turn on motor switch. The charge light on the panel should be lit. If not, check and reset the circuit breaker on the front panel.
5. Press the GREEN test button. While pressing button, observe meters for proper readings. Hold for no more than 10 seconds.

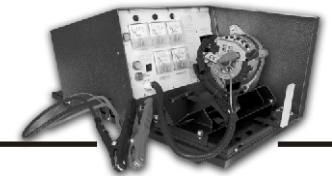


Test Lead EL3



881 Alternator and Starter Test Bench

Test Leads



BAD DIODE LIGHT



CHARGE LIGHT



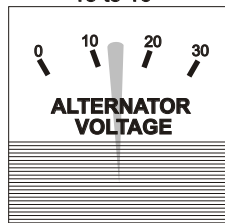
AUXILIARY LIGHT



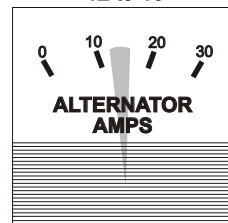
MILLIAMPERE METER
6 or less



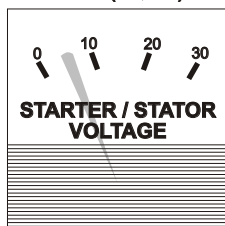
ALTERNATOR VOLTAGE
13 to 16



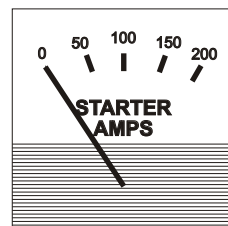
ALTERNATOR AMPERAGE
12 to 16



STARTER VOLTAGE
STATOR VOLTAGE
7 to 8 (sta)
14-16 (61, d+)



STARTER AMPERAGE
0



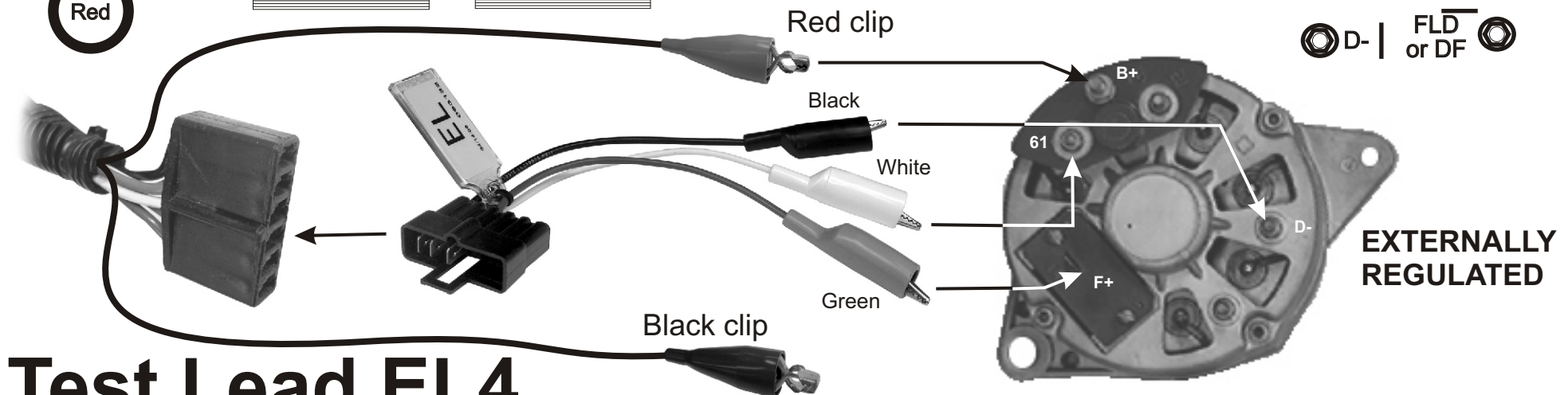
Blue

Green

Red

Many alternators use the same plug with different wiring. Please refer to test lead chart for the correct test lead requirements!

1. Readings for a good alternator are in the shaded area. All meter readings are $\pm 5\%$.
2. Insert lead as shown below and slide alternator onto alternator holder pin.
3. Install the belt making sure it is under the belt retaining clip. Slide the green handle to the right, locking handle into retaining tab and close the belt guard. Make sure to keep your fingers and clothing free of the pulley and belt.
4. Turn on motor switch. The charge light on the panel should be lit. If not, check and reset the circuit breaker on the front panel.
5. Press the GREEN test button. While pressing button, observe meters for proper readings. Hold for no more than 10 seconds.

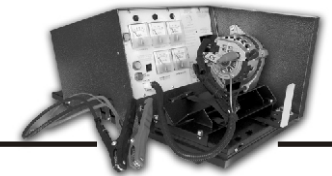


Test Lead EL4



881 Alternator and Starter Test Bench

Test Leads



BAD DIODE LIGHT



CHARGE LIGHT



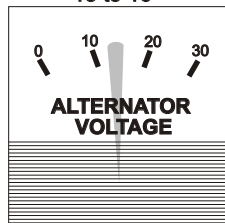
AUXILIARY LIGHT



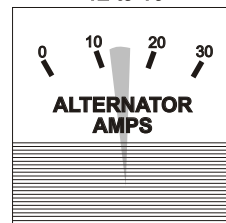
MILLIAMPERE METER
6 or less



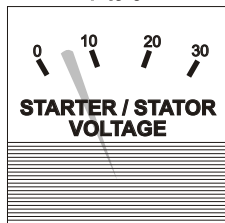
ALTERNATOR VOLTAGE
13 to 16



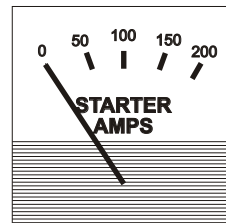
ALTERNATOR AMPERAGE
12 to 16



STARTER VOLTAGE
STATOR VOLTAGE
7 to 8



STARTER AMPERAGE
0



Blue

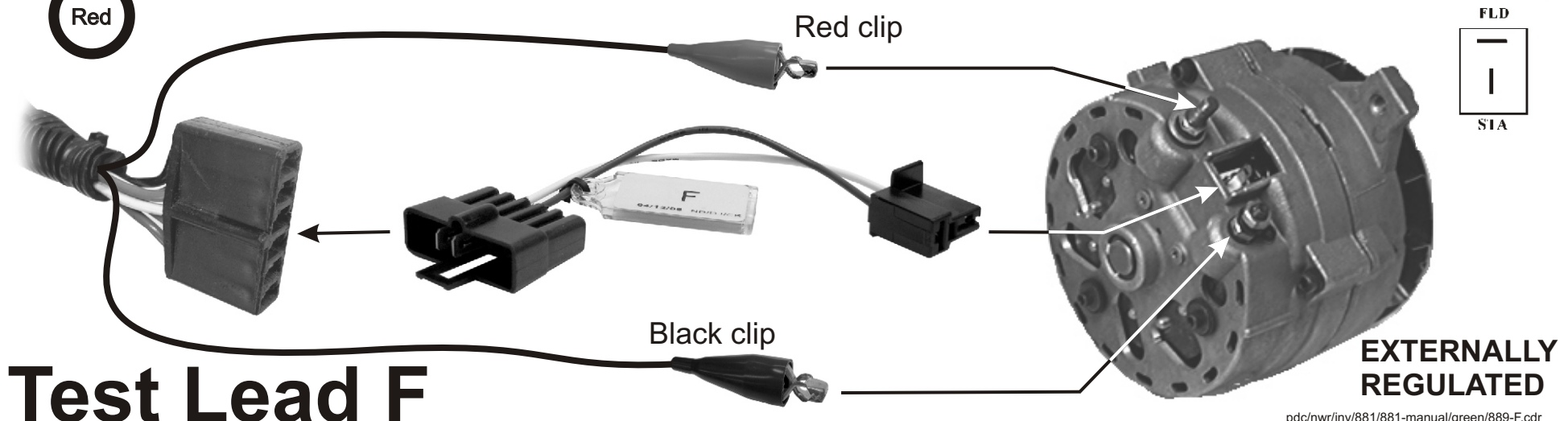
Green

Red



Many alternators use the same plug with different wiring. Please refer to test lead chart for the correct test lead requirements!

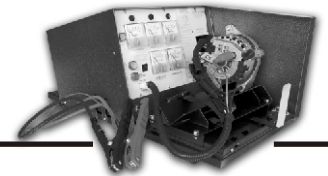
1. Readings for a good alternator are in the shaded area. All meter readings are $\pm 5\%$.
2. Insert lead as shown below and slide alternator onto alternator holder pin.
3. Install the belt making sure it is under the belt retaining clip. Slide the green handle to the right, locking handle into retaining tab and close the belt guard. Make sure to keep your fingers and clothing free of the pulley and belt.
4. Turn on motor switch. The charge light on the panel should be lit. If not, check and reset the circuit breaker on the front panel.
5. Press the GREEN test button. While pressing button, observe meters for proper readings. Hold for no more than 10 seconds.





881 Alternator and Starter Test Bench

Test Leads



BAD DIODE LIGHT



CHARGE LIGHT



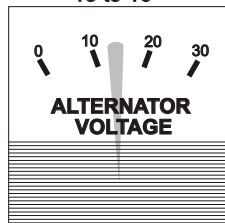
AUXILIARY LIGHT



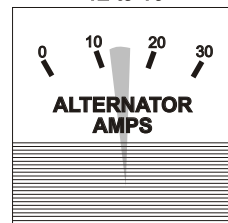
MILLIAMPERE METER
6 or less



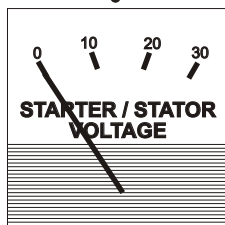
ALTERNATOR VOLTAGE
13 to 16



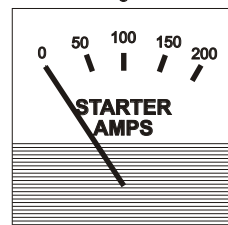
ALTERNATOR AMPERAGE
12 to 16



STARTER VOLTAGE
STATOR VOLTAGE
0



STARTER AMPERAGE
0



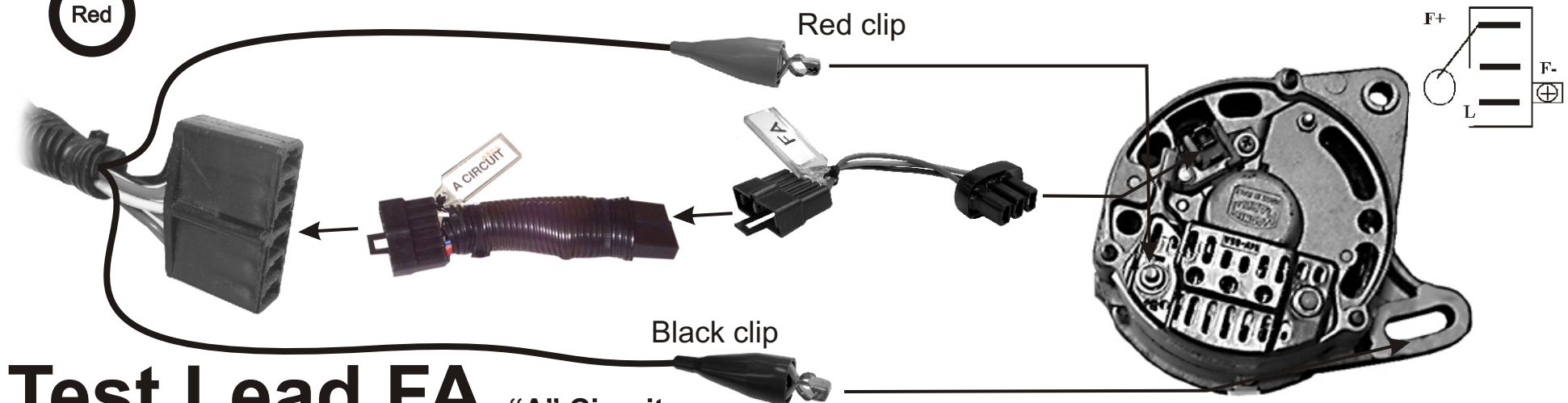
Blue

Green

Red

Many alternators use the same plug with different wiring. Please refer to test lead chart for the correct test lead requirements!

1. Readings for a good alternator are in the shaded area. All meter readings are $\pm 5\%$.
2. Insert lead as shown below and slide alternator onto alternator holder pin. Make sure "A" circuit adapter is connected.
3. Install the belt making sure it is under the belt retaining clip. Slide the green handle to the right, locking handle into retaining tab and close the belt guard. Make sure to keep your fingers and clothing free of the pulley and belt.
4. Turn on motor switch. The charge light on the panel should be lit. If not, check and reset the circuit breaker on the front panel.
5. Press the GREEN test button **MOMENTARILY** and **RELEASE**. Observe meters for proper readings. Hold for no more than 3 seconds.

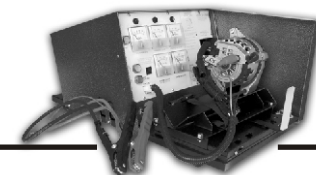


Test Lead FA "A" Circuit



881 Alternator and Starter Test Bench

Test Leads



BAD DIODE LIGHT



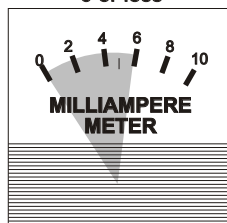
CHARGE LIGHT



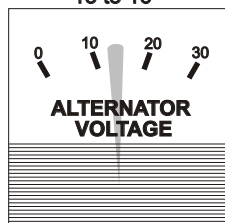
AUXILIARY LIGHT



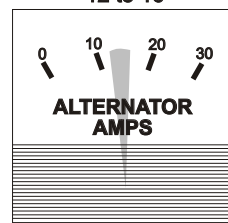
MILLIAMPERE METER
6 or less



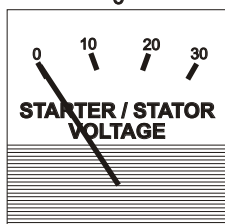
ALTERNATOR VOLTAGE
13 to 16



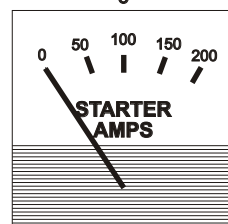
ALTERNATOR AMPERAGE
12 to 16



STARTER VOLTAGE
STATOR VOLTAGE
0



STARTER AMPERAGE
0



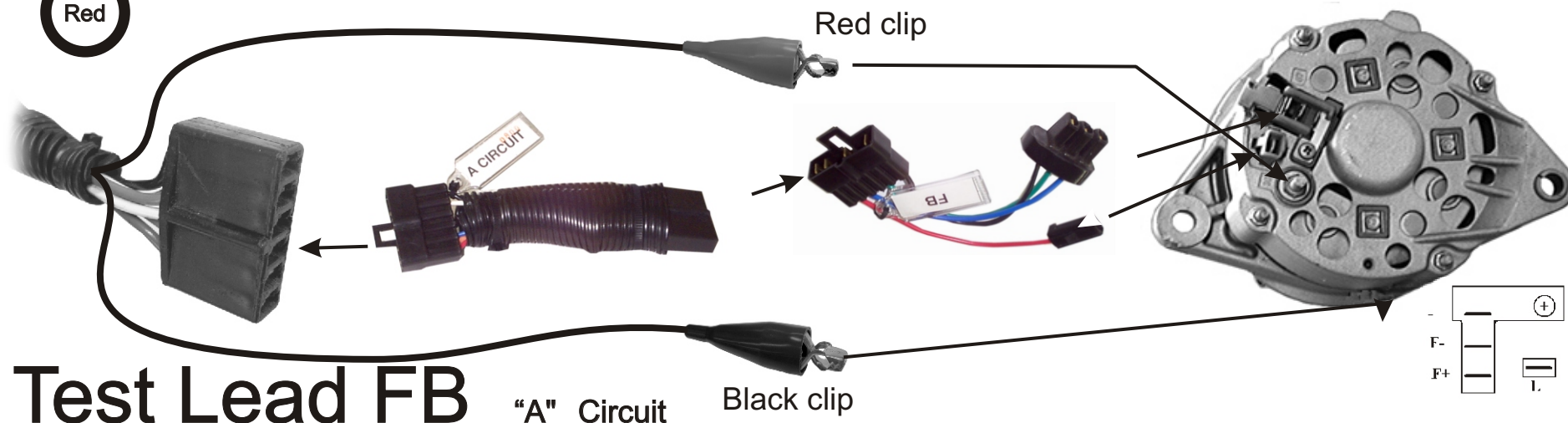
Blue

Green

Red

Many alternators use the same plug with different wiring. Please refer to test lead chart for the correct test lead requirements!

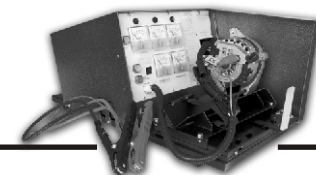
1. Readings for a good alternator are in the shaded area. All meter readings are $\pm 5\%$.
2. Insert lead as shown below and slide alternator onto alternator holder pin.
3. Install the belt making sure it is under the belt retaining clip. Slide the green handle to the right, locking handle into retaining tab and close the belt guard. Make sure to keep your fingers and clothing free of the pulley and belt.
4. Turn on motor switch. The charge light on the panel should be lit. If not, check and reset the circuit breaker on the front panel.
5. Press the GREEN test button **MOMENTARILY** and **RELEASE**. Observe meters for proper readings. Hold for no more than 3 seconds.





881 Alternator and Starter Test Bench

Test Leads



BAD DIODE LIGHT



CHARGE LIGHT



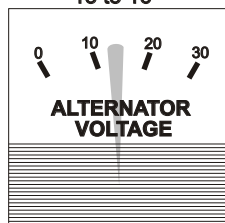
AUXILIARY LIGHT



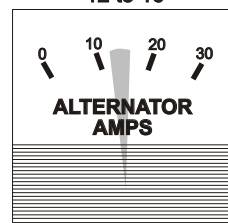
MILLIAMPERE METER
6 or less



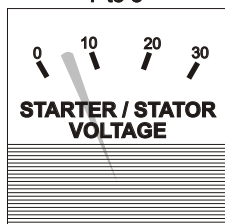
ALTERNATOR VOLTAGE
13 to 16



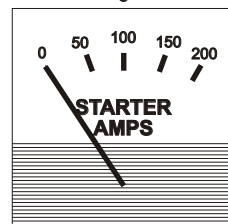
ALTERNATOR AMPERAGE
12 to 16



STARTER VOLTAGE
STATOR VOLTAGE
7 to 8



STARTER AMPERAGE
0



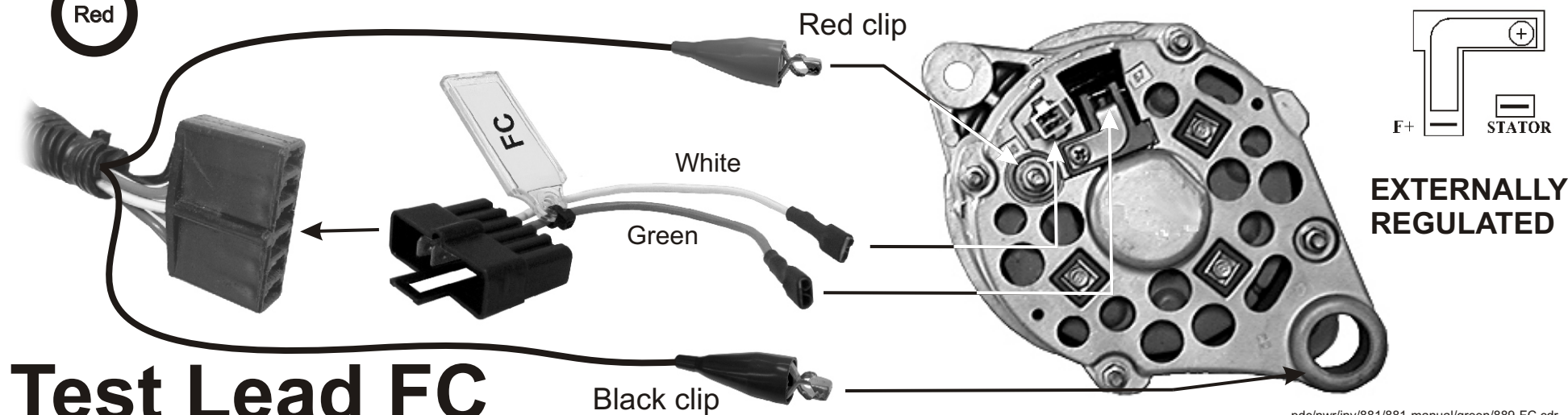
Blue

Green

Red

Many alternators use the same plug with different wiring. Please refer to test lead chart for the correct test lead requirements!

1. Readings for a good alternator are in the shaded area. All meter readings are $\pm 5\%$.
2. Insert lead as shown below and slide alternator onto alternator holder pin.
3. Install the belt making sure it is under the belt retaining clip. Slide the green handle to the right, locking handle into retaining tab and close the belt guard. Make sure to keep your fingers and clothing free of the pulley and belt.
4. Turn on motor switch. The charge light on the panel should be lit. If not, check and reset the circuit breaker on the front panel.
5. Press the GREEN test button. While pressing button, observe meters for proper readings. Hold for no more than 10 seconds.

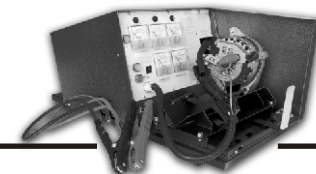


Test Lead FC



881 Alternator and Starter Test Bench

Test Leads



BAD DIODE LIGHT



CHARGE LIGHT



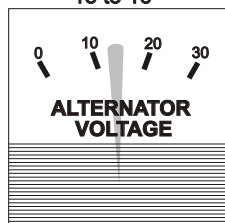
AUXILIARY LIGHT



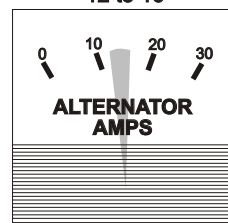
MILLIAMPERE METER
6 or less



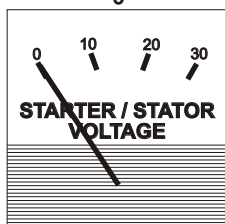
ALTERNATOR VOLTAGE
13 to 16



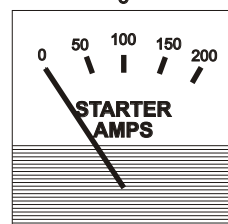
ALTERNATOR AMPERAGE
12 to 16



STARTER VOLTAGE
STATOR VOLTAGE
0



STARTER AMPERAGE
0



Blue

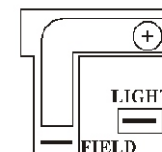
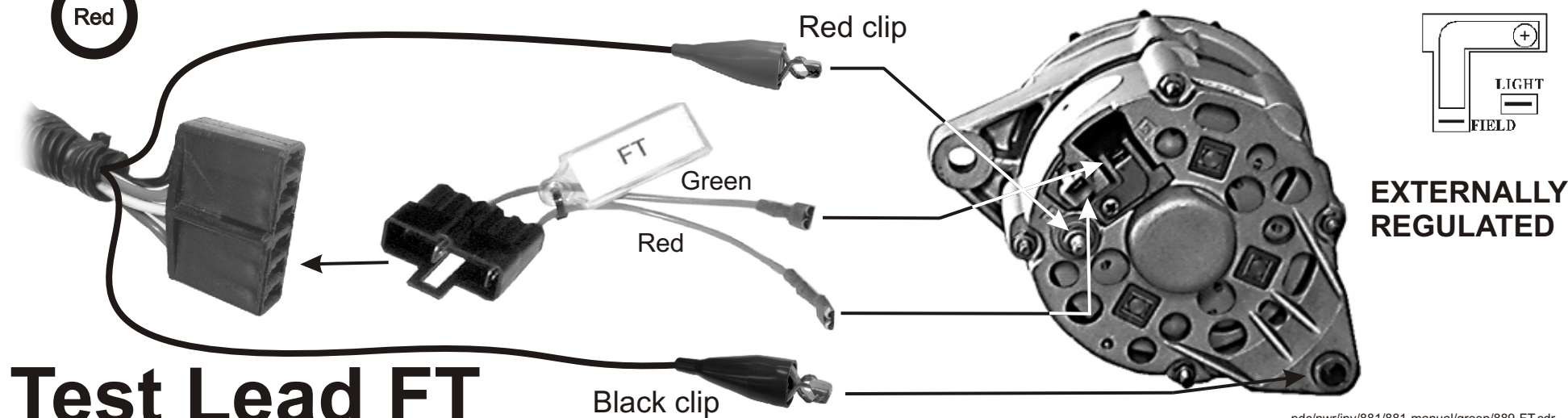
Green

Red



Many alternators use the same plug with different wiring. Please refer to test lead chart for the correct test lead requirements!

1. Readings for a good alternator are in the shaded area. All meter readings are $\pm 5\%$.
2. Insert lead as shown below and slide alternator onto alternator holder pin.
3. Install the belt making sure it is under the belt retaining clip. Slide the green handle to the right, locking handle into retaining tab and close the belt guard. Make sure to keep your fingers and clothing free of the pulley and belt.
4. Turn on motor switch. The charge light on the panel should be lit. If not, check and reset the circuit breaker on the front panel.
5. Press the GREEN test button. While pressing button, observe meters for proper readings. Hold for no more than 10 seconds.



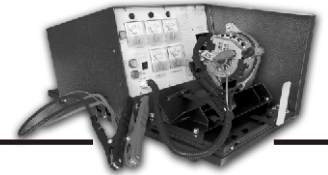
**EXTERNALLY
REGULATED**

Test Lead FT



881 Alternator and Starter Test Bench

Test Leads



BAD DIODE LIGHT



CHARGE LIGHT



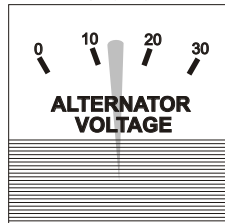
AUXILIARY LIGHT



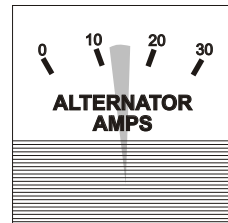
MILLIAMPERE METER
6 or less



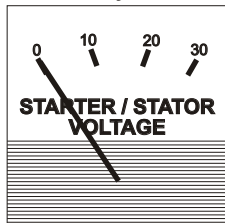
ALTERNATOR VOLTAGE
13 to 16



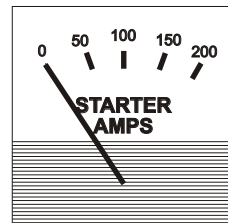
ALTERNATOR AMPERAGE
12 to 16



STARTER VOLTAGE
STATOR VOLTAGE
0



STARTER AMPERAGE
0



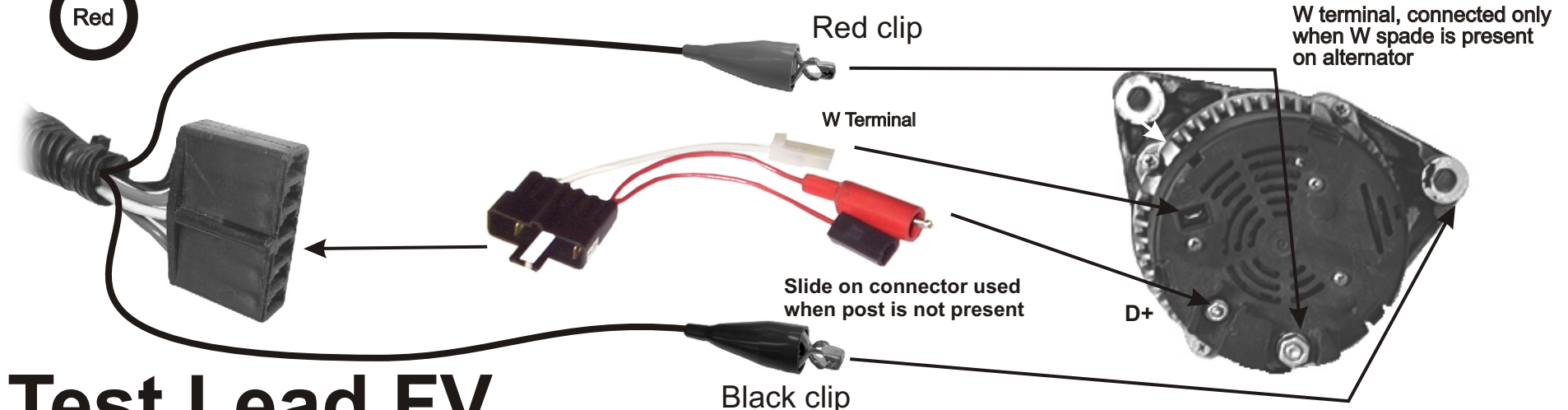
Blue

Green

Red

Many alternators use the same plug with different wiring. Please refer to test lead chart for the correct test lead requirements!

1. Readings for a good alternator are in the shaded area. All meter readings are $\pm 5\%$.
2. Insert lead as shown below and slide alternator onto alternator holder pin.
3. Install the belt making sure it is under the belt retaining clip. Slide the green handle to the right, locking handle into retaining tab and close the belt guard. Make sure to keep your fingers and clothing free of the pulley and belt.
4. Turn on motor switch. The charge light on the panel should be lit. If not, check and reset the circuit breaker on the front panel.
5. Press the GREEN test button **MOMENTARILY** and **RELEASE**. Observe meters for proper readings. Hold for no more than 3 seconds.

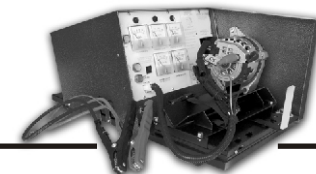


Test Lead FV



881 Alternator and Starter Test Bench

Test Leads



BAD DIODE LIGHT



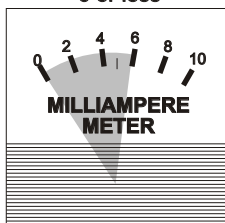
CHARGE LIGHT



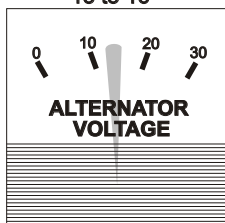
AUXILIARY LIGHT



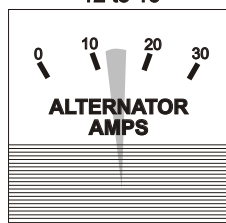
MILLIAMPERE METER
6 or less



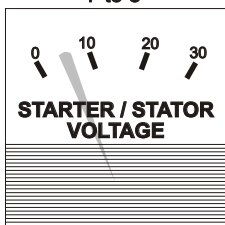
ALTERNATOR VOLTAGE
13 to 16



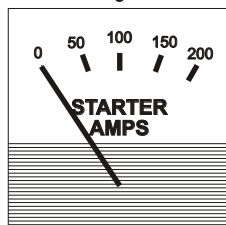
ALTERNATOR AMPERAGE
12 to 16



STARTER VOLTAGE
STATOR VOLTAGE
7 to 8



STARTER AMPERAGE
0



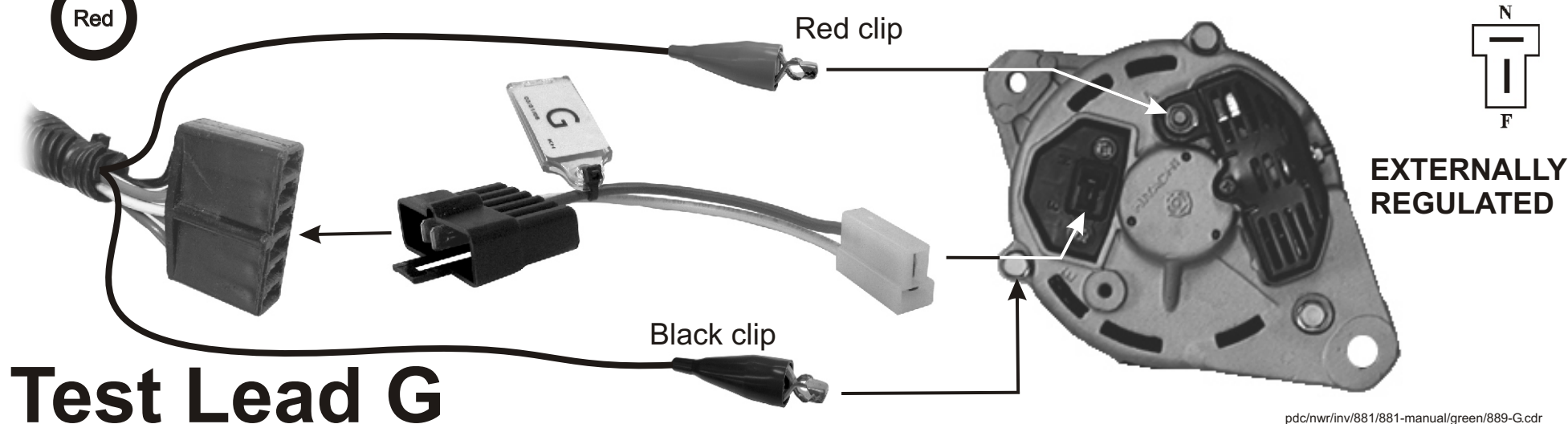
Blue

Green

Red

Many alternators use the same plug with different wiring. Please refer to test lead chart for the correct test lead requirements!

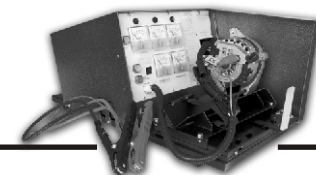
1. Readings for a good alternator are in the shaded area. All meter readings are $\pm 5\%$.
2. Insert lead as shown below and slide alternator onto alternator holder pin.
3. Install the belt making sure it is under the belt retaining clip. Slide the green handle to the right, locking handle into retaining tab and close the belt guard. Make sure to keep your fingers and clothing free of the pulley and belt.
4. Turn on motor switch. The charge light on the panel should be lit. If not, check and reset the circuit breaker on the front panel.
5. Press the GREEN test button **MOMENTARILY** and **RELEASE**. Observe meters for proper readings. Hold for no more than 10 seconds.





881 Alternator and Starter Test Bench

Test Leads



BAD DIODE LIGHT



CHARGE LIGHT



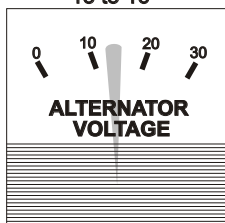
AUXILIARY LIGHT



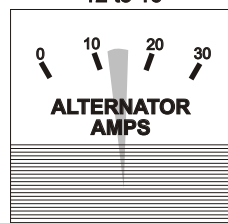
MILLIAMPERE METER
6 or less



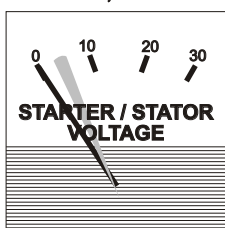
ALTERNATOR VOLTAGE
13 to 16



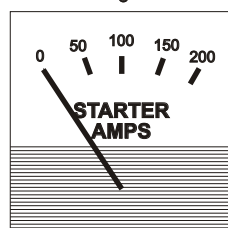
ALTERNATOR AMPERAGE
12 to 16



STARTER VOLTAGE
STATOR VOLTAGE
0, unless P
connected, then 7 to 8



STARTER AMPERAGE
0



Blue

Green

Red



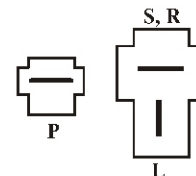
Many alternators use the same plug with different wiring. Please refer to test lead chart for the correct test lead requirements!

1. Readings for a good alternator are in the shaded area. All meter readings are $\pm 5\%$.
2. Insert lead as shown below and slide alternator onto alternator holder pin.
3. Install the belt making sure it is under the belt retaining clip. Slide the green handle to the right, locking handle into retaining tab and close the belt guard. Make sure to keep your fingers and clothing free of the pulley and belt.
4. Turn on motor switch. The charge light on the panel should be lit. If not, check and reset the circuit breaker on the front panel.
5. Press the GREEN test button **MOMENTARILY** and **RELEASE**. Observe meters for proper readings. Hold for no more than 3 seconds.

Red clip

"P" terminal, connected only when P spade is present on alternator

Black clip

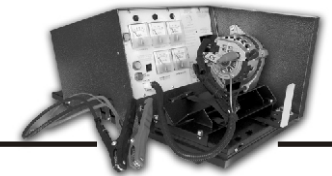


Test Lead H



881 Alternator and Starter Test Bench

Test Leads



BAD DIODE LIGHT



CHARGE LIGHT



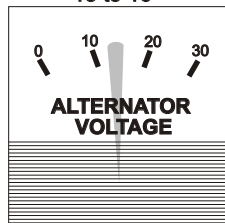
AUXILIARY LIGHT



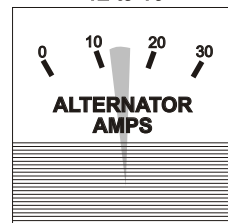
MILLIAMPERE METER
6 or less



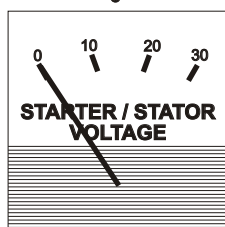
ALTERNATOR VOLTAGE
13 to 16



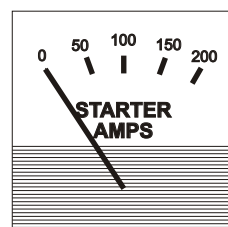
ALTERNATOR AMPERAGE
12 to 16



STARTER VOLTAGE
STATOR VOLTAGE
0



STARTER AMPERAGE
0



Blue

Green

Red

Many alternators use the same plug with different wiring. Please refer to test lead chart for the correct test lead requirements!

1. Readings for a good alternator are in the shaded area. All meter readings are $\pm 5\%$.
2. Insert lead as shown below and slide alternator onto alternator holder pin.
3. Install the belt making sure it is under the belt retaining clip. Slide the green handle to the right, locking handle into retaining tab and close the belt guard. Make sure to keep your fingers and clothing free of the pulley and belt.
4. Turn on motor switch. The charge light on the panel should be lit. If not, check and reset the circuit breaker on the front panel.
5. Press the GREEN test button **MOMENTARILY** and **RELEASE**. Observe meters for proper readings. Hold for no more than 3 seconds.

Red clip

Black clip

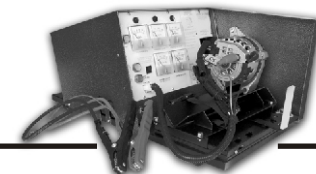


Test Lead HL



881 Alternator and Starter Test Bench

Test Leads



BAD DIODE LIGHT



CHARGE LIGHT



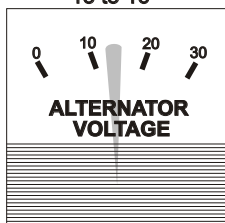
AUXILIARY LIGHT



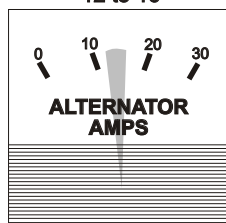
MILLIAMPERE METER
6 or less



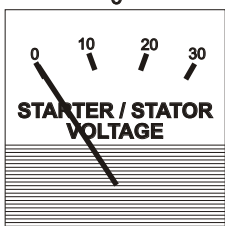
ALTERNATOR VOLTAGE
13 to 16



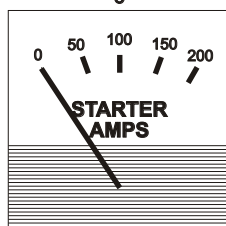
ALTERNATOR AMPERAGE
12 to 16



STARTER VOLTAGE
STATOR VOLTAGE
0



STARTER AMPERAGE
0



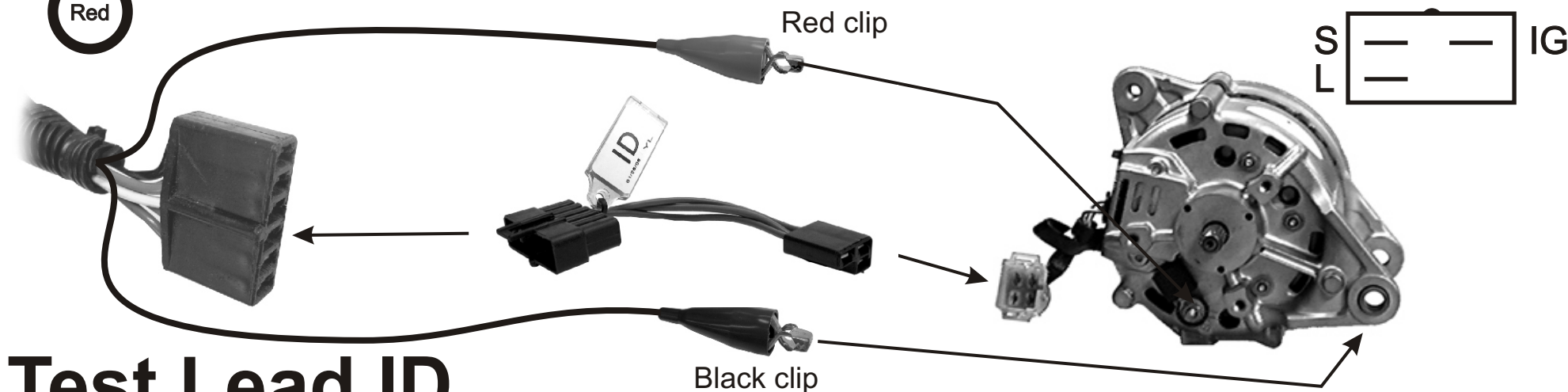
Blue

Green

Red

Many alternators use the same plug with different wiring. Please refer to test lead chart for the correct test lead requirements!

1. Readings for a good alternator are in the shaded area. All meter readings are $\pm 5\%$.
2. Insert lead as shown below and slide alternator onto alternator holder pin.
3. Install the belt making sure it is under the belt retaining clip. Slide the green handle to the right, locking handle into retaining tab and close the belt guard. Make sure to keep your fingers and clothing free of the pulley and belt.
4. Turn on motor switch. The charge light on the panel should be lit. If not, check and reset the circuit breaker on the front panel.
5. Press the GREEN test button **MOMENTARILY** and **RELEASE**. Observe meters for proper readings. Hold for no more than 3 seconds.

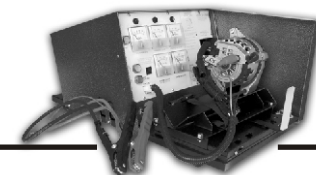


Test Lead ID



881 Alternator and Starter Test Bench

Test Leads



BAD DIODE LIGHT



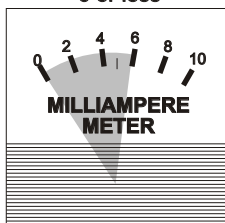
CHARGE LIGHT



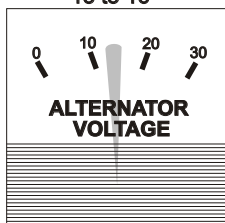
AUXILIARY LIGHT



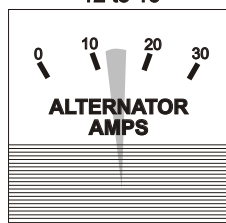
MILLIAMPERE METER
6 or less



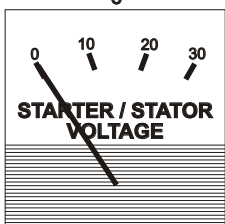
ALTERNATOR VOLTAGE
13 to 16



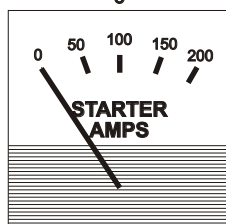
ALTERNATOR AMPERAGE
12 to 16



STARTER VOLTAGE
STATOR VOLTAGE
0



STARTER AMPERAGE
0



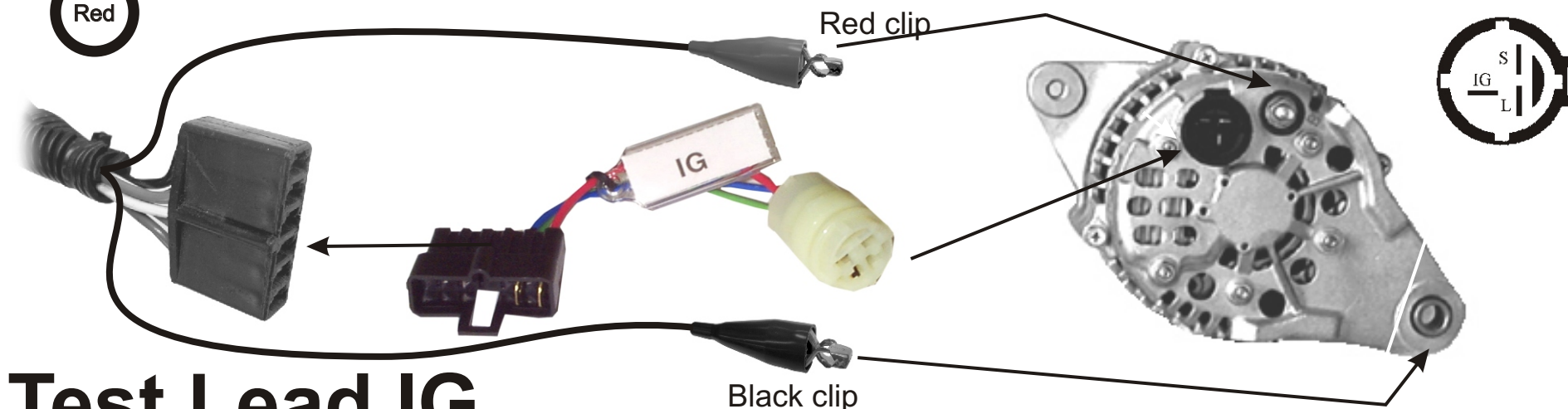
Blue

Green

Red

Many alternators use the same plug with different wiring. Please refer to test lead chart for the correct test lead requirements!

1. Readings for a good alternator are in the shaded area. All meter readings are $\pm 5\%$.
2. Insert lead as shown below and slide alternator onto alternator holder pin.
3. Install the belt making sure it is under the belt retaining clip. Slide the green handle to the right, locking handle into retaining tab and close the belt guard. Make sure to keep your fingers and clothing free of the pulley and belt.
4. Turn on motor switch. The charge light on the panel should be lit. If not, check and reset the circuit breaker on the front panel.
5. Press the GREEN test button **MOMENTARILY** and **RELEASE**. Observe meters for proper readings. Hold for no more than 3 seconds.

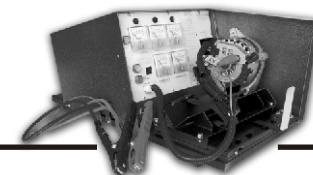


Test Lead IG



881 Alternator and Starter Test Bench

Test Leads



BAD DIODE LIGHT



CHARGE LIGHT



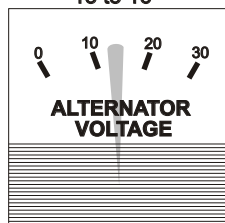
AUXILIARY LIGHT



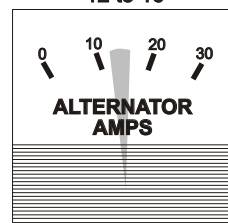
MILLIAMPERE METER
6 or less



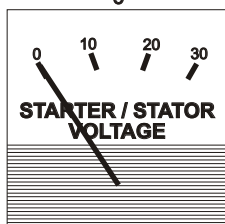
ALTERNATOR VOLTAGE
13 to 16



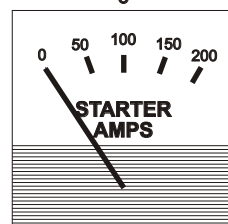
ALTERNATOR AMPERAGE
12 to 16



STARTER VOLTAGE
STATOR VOLTAGE
0



STARTER AMPERAGE
0



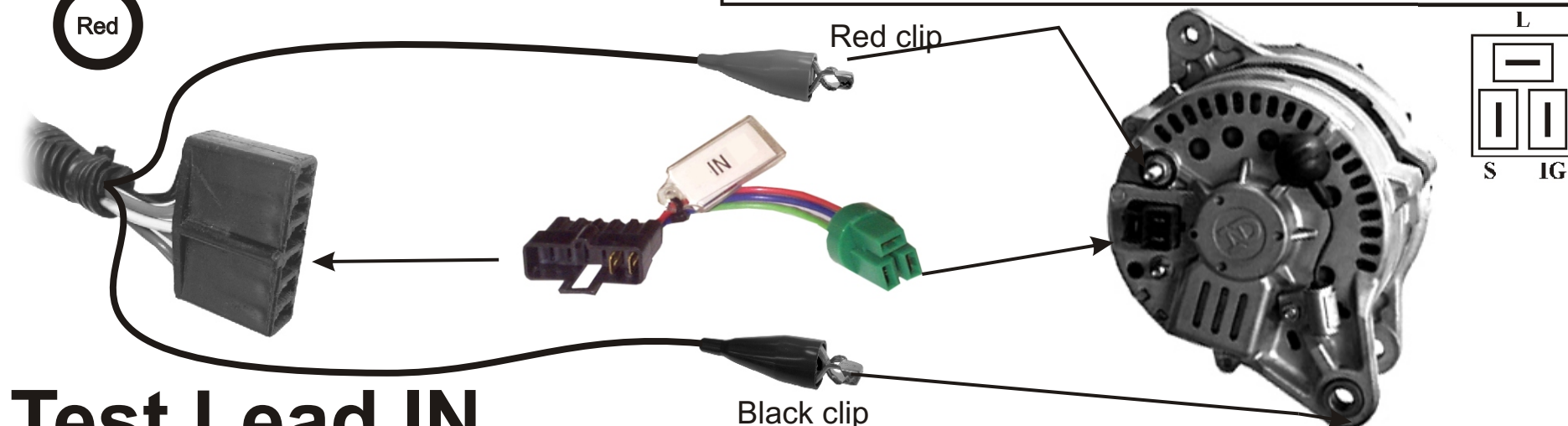
Blue

Green

Red

Many alternators use the same plug with different wiring. Please refer to test lead chart for the correct test lead requirements!

1. Readings for a good alternator are in the shaded area. All meter readings are $\pm 5\%$.
2. Insert lead as shown below and slide alternator onto alternator holder pin.
3. Install the belt making sure it is under the belt retaining clip. Slide the green handle to the right, locking handle into retaining tab and close the belt guard. Make sure to keep your fingers and clothing free of the pulley and belt.
4. Turn on motor switch. The charge light on the panel should be lit. If not, check and reset the circuit breaker on the front panel.
5. Press the GREEN test button MOMENTARILY and RELEASE. Observe meters for proper readings. Hold for no more than 3 seconds.

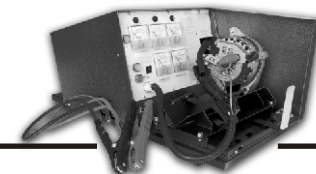


Test Lead IN



881 Alternator and Starter Test Bench

Test Leads



BAD DIODE LIGHT



CHARGE LIGHT



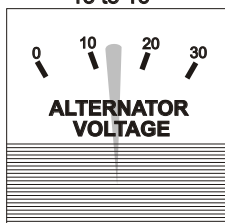
AUXILIARY LIGHT



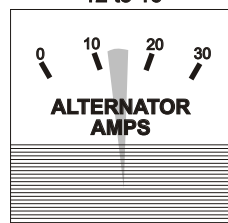
MILLIAMPERE METER
6 or less



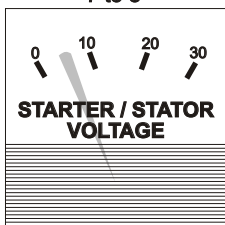
ALTERNATOR VOLTAGE
13 to 16



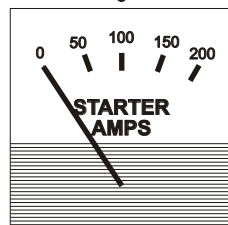
ALTERNATOR AMPERAGE
12 to 16



STARTER VOLTAGE
STATOR VOLTAGE
7 to 8



STARTER AMPERAGE
0



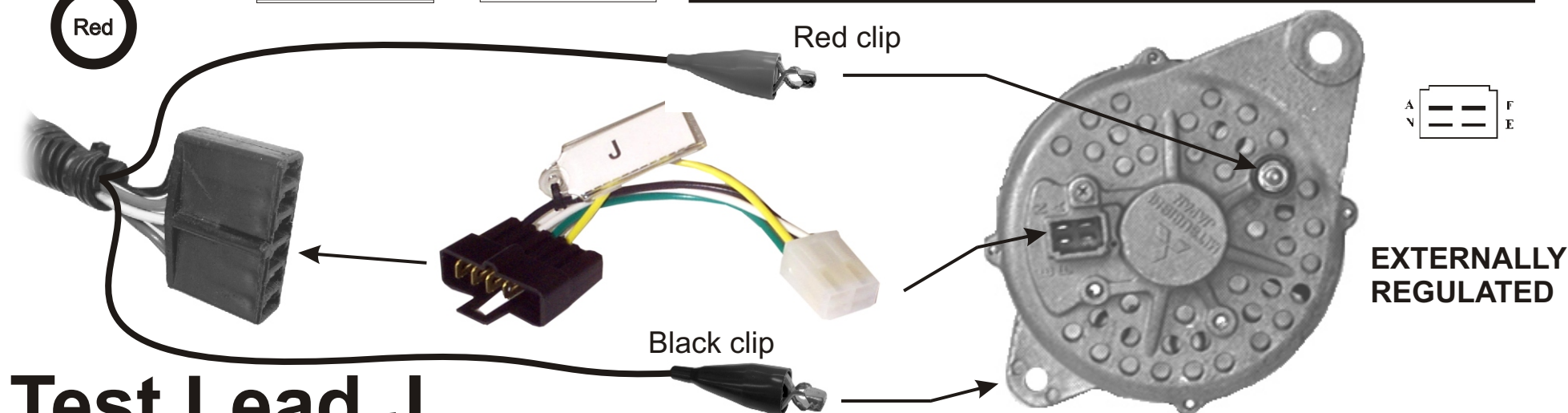
Blue

Green

Red

Many alternators use the same plug with different wiring. Please refer to test lead chart for the correct test lead requirements!

1. Readings for a good alternator are in the shaded area. All meter readings are $\pm 5\%$.
2. Insert lead as shown below and slide alternator onto alternator holder pin.
3. Install the belt making sure it is under the belt retaining clip. Slide the green handle to the right, locking handle into retaining tab and close the belt guard. Make sure to keep your fingers and clothing free of the pulley and belt.
4. Turn on motor switch. The charge light on the panel should be lit. If not, check and reset the circuit breaker on the front panel.
5. Press the GREEN test button. While pressing button, observe meters for proper readings. Hold for no more than 10 seconds.

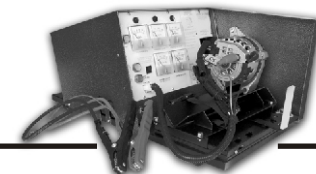


Test Lead J



881 Alternator and Starter Test Bench

Test Leads



BAD DIODE LIGHT



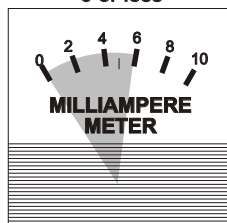
CHARGE LIGHT



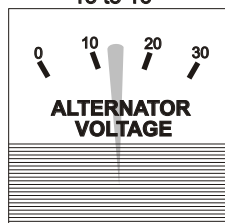
AUXILIARY LIGHT



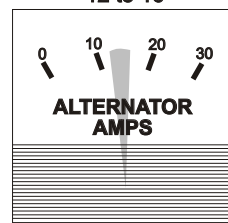
MILLIAMPERE METER
6 or less



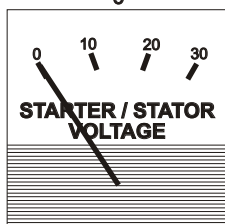
ALTERNATOR VOLTAGE
13 to 16



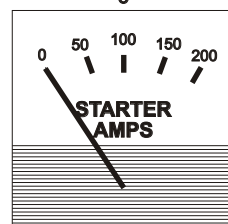
ALTERNATOR AMPERAGE
12 to 16



STARTER VOLTAGE
STATOR VOLTAGE
0



STARTER AMPERAGE
0



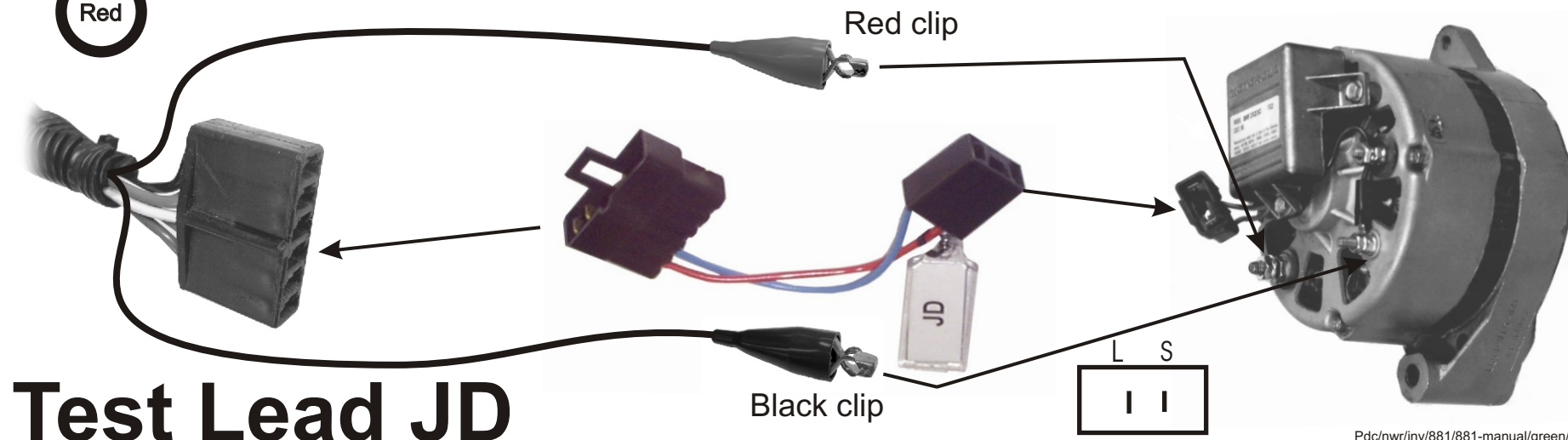
Blue

Green

Red

Many alternators use the same plug with different wiring. Please refer to test lead chart for the correct test lead requirements!

1. Readings for a good alternator are in the shaded area. All meter readings are $\pm 5\%$.
2. Insert lead as shown below and slide alternator onto alternator holder pin.
3. Install the belt making sure it is under the belt retaining clip. Slide the green handle to the right, locking handle into retaining tab and close the belt guard. Make sure to keep your fingers and clothing free of the pulley and belt.
4. Turn on motor switch. The charge light on the panel should be lit. If not, check and reset the circuit breaker on the front panel.
5. Press the GREEN test button **MOMENTARILY** and **RELEASE**. Observe meters for proper readings. Hold for no more than 3 seconds.

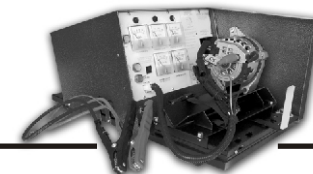


Test Lead JD



881 Alternator and Starter Test Bench

Test Leads



BAD DIODE LIGHT



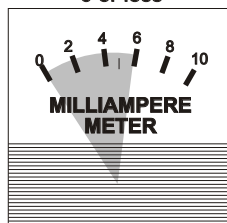
CHARGE LIGHT



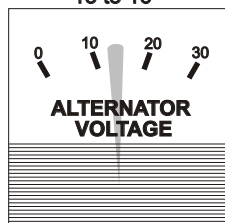
AUXILIARY LIGHT



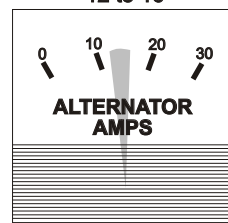
MILLIAMPERE METER
6 or less



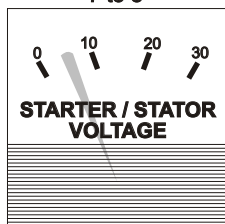
ALTERNATOR VOLTAGE
13 to 16



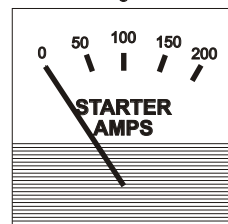
ALTERNATOR AMPERAGE
12 to 16



STARTER VOLTAGE
STATOR VOLTAGE
7 to 8



STARTER AMPERAGE
0



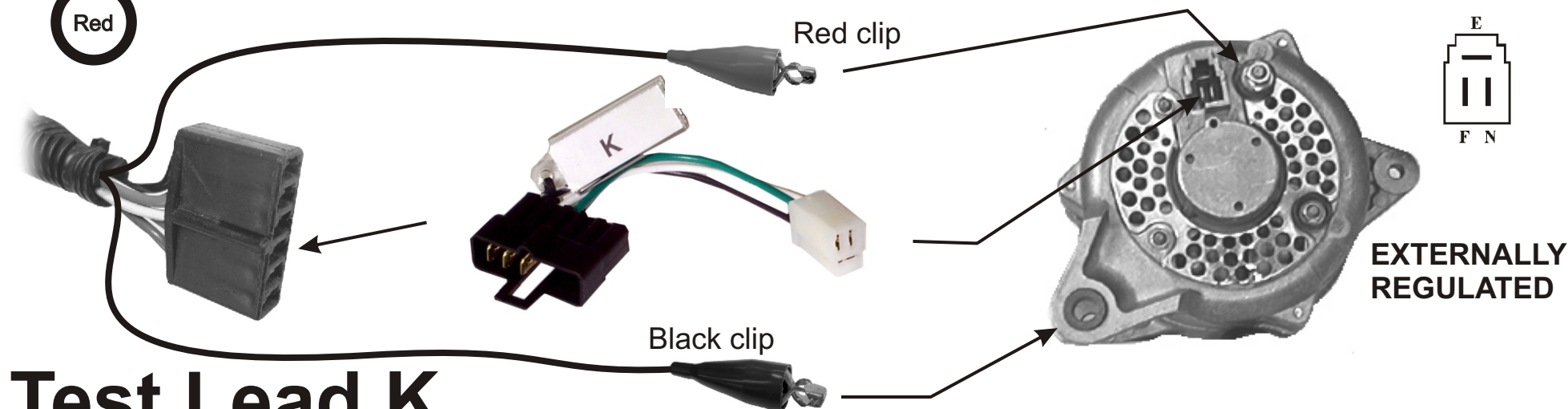
Blue

Green

Red

Many alternators use the same plug with different wiring. Please refer to test lead chart for the correct test lead requirements!

1. Readings for a good alternator are in the shaded area. All meter readings are $\pm 5\%$.
2. Insert lead as shown below and slide alternator onto alternator holder pin.
3. Install the belt making sure it is under the belt retaining clip. Slide the green handle to the right, locking handle into retaining tab and close the belt guard. Make sure to keep your fingers and clothing free of the pulley and belt.
4. Turn on motor switch. The charge light on the panel should be lit. If not, check and reset the circuit breaker on the front panel.
5. Press the GREEN test button. While pressing button, observe meters for proper readings. Hold for no more than 10 seconds.

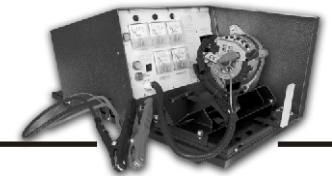


Test Lead K



881 Alternator and Starter Test Bench

Test Leads



BAD DIODE LIGHT



CHARGE LIGHT



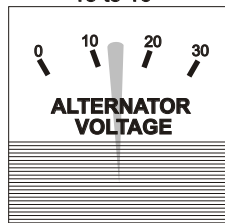
AUXILIARY LIGHT



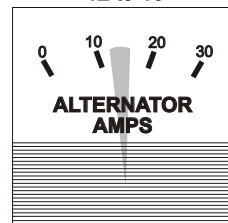
MILLIAMPERE METER
6 or less



ALTERNATOR VOLTAGE
13 to 16



ALTERNATOR AMPERAGE
12 to 16

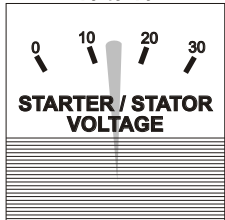


Blue

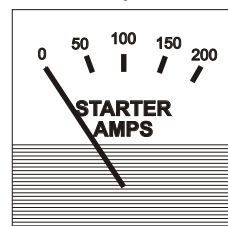
Green

Red

STARTER VOLTAGE
STATOR VOLTAGE
13 to 16



STARTER AMPERAGE
0

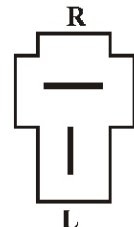


Many alternators use the same plug with different wiring. Please refer to test lead chart for the correct test lead requirements!

1. Readings for a good alternator are in the shaded area. All meter readings are $\pm 5\%$.
2. Insert lead as shown below and slide alternator onto alternator holder pin.
3. Install the belt making sure it is under the belt retaining clip. Slide the green handle to the right, locking handle into retaining tab and close the belt guard. Make sure to keep your fingers and clothing free of the pulley and belt.
4. Turn on motor switch. The charge light on the panel should be lit. If not, check and reset the circuit breaker on the front panel.
5. Press the GREEN test button **MOMENTARILY** and **RELEASE**. Observe meters for proper readings. Hold for no more than 3 seconds.

Red clip

Black clip

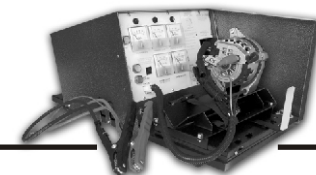


Test Lead LR



881 Alternator and Starter Test Bench

Test Leads



BAD DIODE LIGHT



CHARGE LIGHT



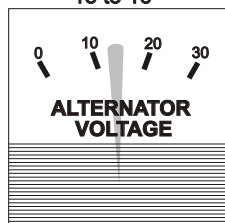
AUXILIARY LIGHT



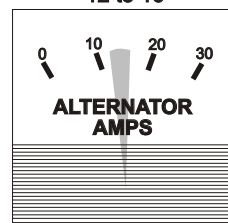
MILLIAMPERE METER
6 or less



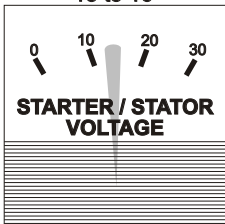
ALTERNATOR VOLTAGE
13 to 16



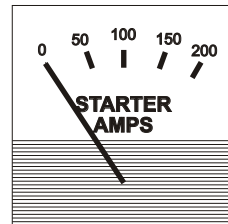
ALTERNATOR AMPERAGE
12 to 16



STARTER VOLTAGE
STATOR VOLTAGE
13 to 16



STARTER AMPERAGE
0



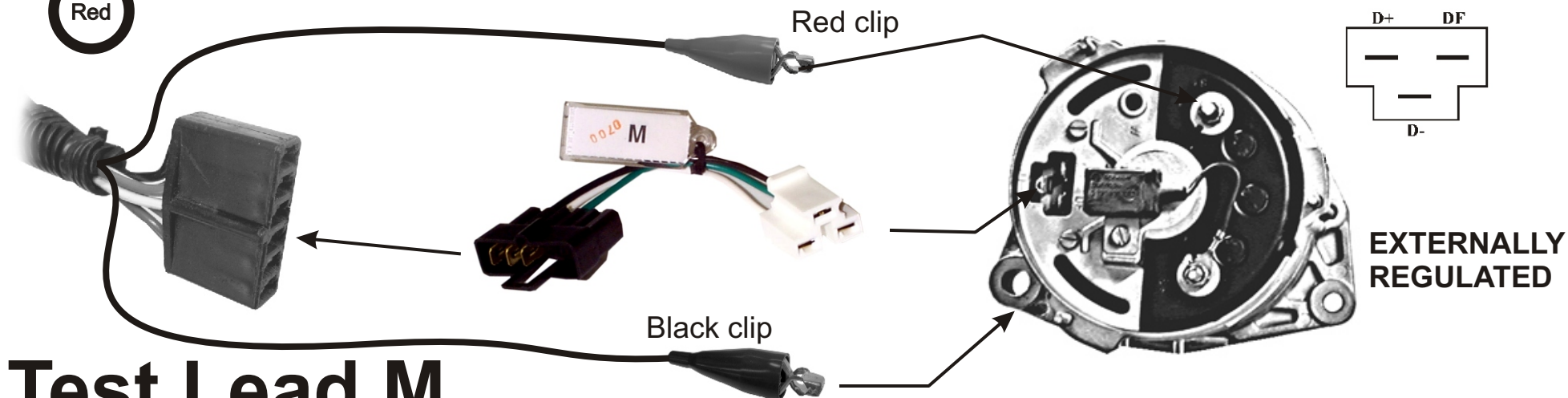
Blue

Green

Red

Many alternators use the same plug with different wiring. Please refer to test lead chart for the correct test lead requirements!

1. Readings for a good alternator are in the shaded area. All meter readings are $\pm 5\%$.
2. Insert lead as shown below and slide alternator onto alternator holder pin.
3. Install the belt making sure it is under the belt retaining clip. Slide the green handle to the right, locking handle into retaining tab and close the belt guard. Make sure to keep your fingers and clothing free of the pulley and belt.
4. Turn on motor switch. The charge light on the panel should be lit. If not, check and reset the circuit breaker on the front panel.
5. Press the GREEN test button. While pressing button, observe meters for proper readings. Hold for no more than 10 seconds.

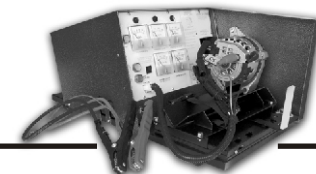


Test Lead M



881 Alternator and Starter Test Bench

Test Leads



BAD DIODE LIGHT



CHARGE LIGHT



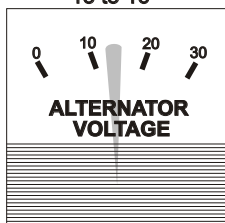
AUXILIARY LIGHT



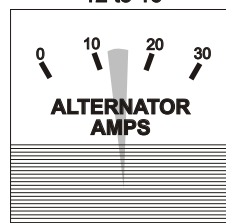
MILLIAMPERE METER
6 or less



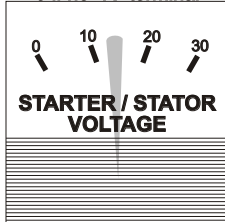
ALTERNATOR VOLTAGE
13 to 16



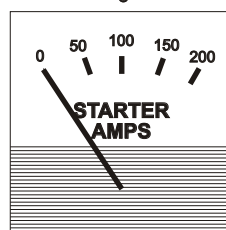
ALTERNATOR AMPERAGE
12 to 16



STARTER VOLTAGE
STATOR VOLTAGE
13 TO 16 if "R" terminal
is present
0 if no "R" terminal



STARTER AMPERAGE
0



Blue

Green

Red

Many alternators use the same plug with different wiring. Please refer to test lead chart for the correct test lead requirements!

1. Readings for a good alternator are in the shaded area. All meter readings are $\pm 5\%$.
2. Insert lead as shown below and slide alternator onto alternator holder pin.
3. Install the belt making sure it is under the belt retaining clip. Slide the green handle to the right, locking handle into retaining tab and close the belt guard. Make sure to keep your fingers and clothing free of the pulley and belt.
4. Turn on motor switch. The charge light on the panel should be lit. If not, check and reset the circuit breaker on the front panel.
5. Press the GREEN test button **MOMENTARILY** and **RELEASE**. Observe meters for proper readings. Hold for no more than 3 seconds.

Red clip



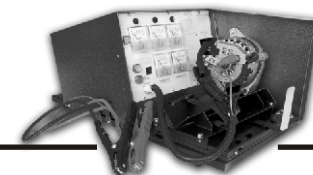
Black clip

Test Lead MD



881 Alternator and Starter Test Bench

Test Leads



BAD DIODE LIGHT



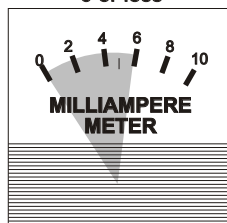
CHARGE LIGHT



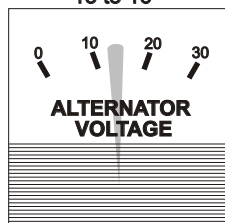
AUXILIARY LIGHT



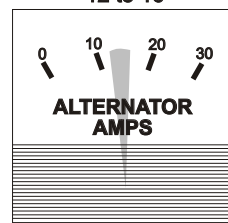
MILLIAMPERE METER
6 or less



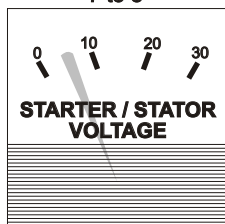
ALTERNATOR VOLTAGE
13 to 16



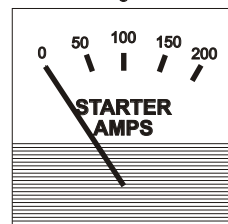
ALTERNATOR AMPERAGE
12 to 16



STARTER VOLTAGE
STATOR VOLTAGE
7 to 8



STARTER AMPERAGE
0



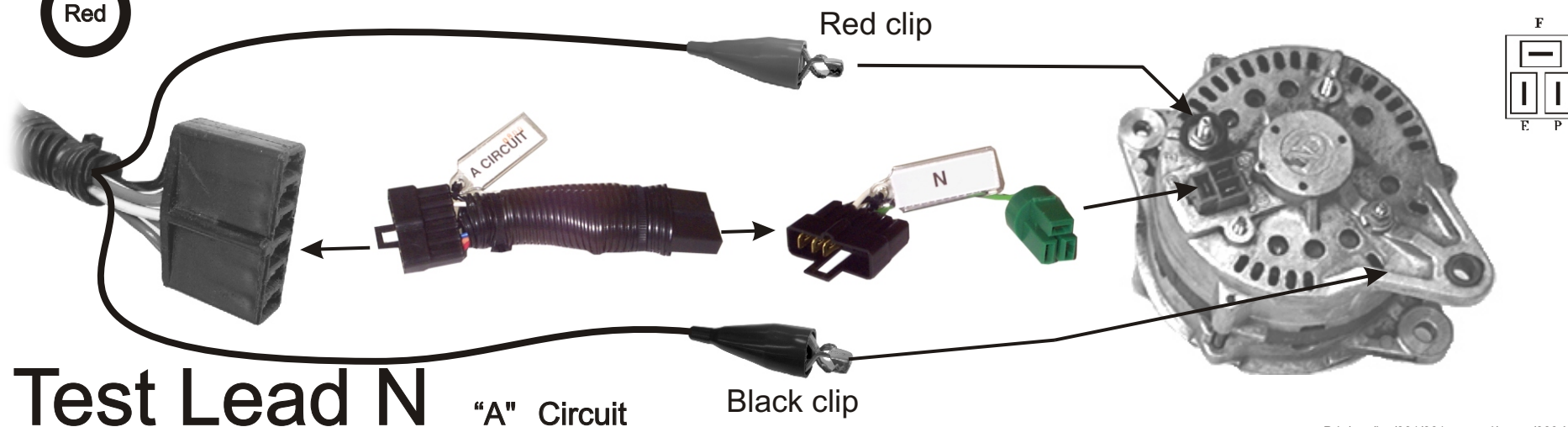
Blue

Green

Red

Many alternators use the same plug with different wiring. Please refer to test lead chart for the correct test lead requirements!

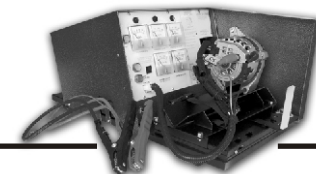
1. Readings for a good alternator are in the shaded area. All meter readings are $\pm 5\%$.
2. Insert lead as shown below and slide alternator onto alternator holder pin.
3. Install the belt making sure it is under the belt retaining clip. Slide the green handle to the right, locking handle into retaining tab and close the belt guard. Make sure to keep your fingers and clothing free of the pulley and belt.
4. Turn on motor switch. The charge light on the panel should be lit. If not, check and reset the circuit breaker on the front panel.
5. Press the GREEN test button **MOMENTARILY** and **RELEASE**. Observe meters for proper readings. Hold for no more than 3 seconds.





881 Alternator and Starter Test Bench

Test Leads



BAD DIODE LIGHT



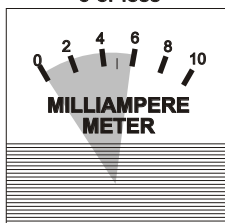
CHARGE LIGHT



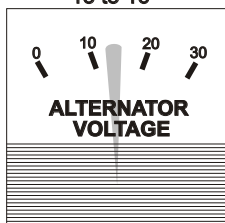
AUXILIARY LIGHT



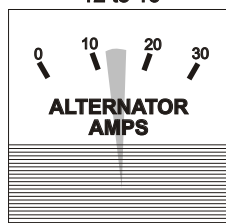
MILLIAMPERE METER
6 or less



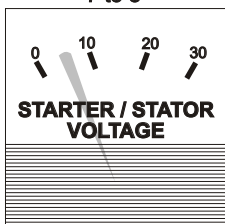
ALTERNATOR VOLTAGE
13 to 16



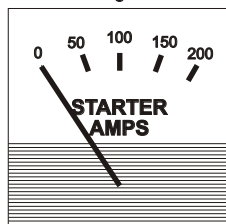
ALTERNATOR AMPERAGE
12 to 16



STARTER VOLTAGE
STATOR VOLTAGE
7 to 8



STARTER AMPERAGE
0



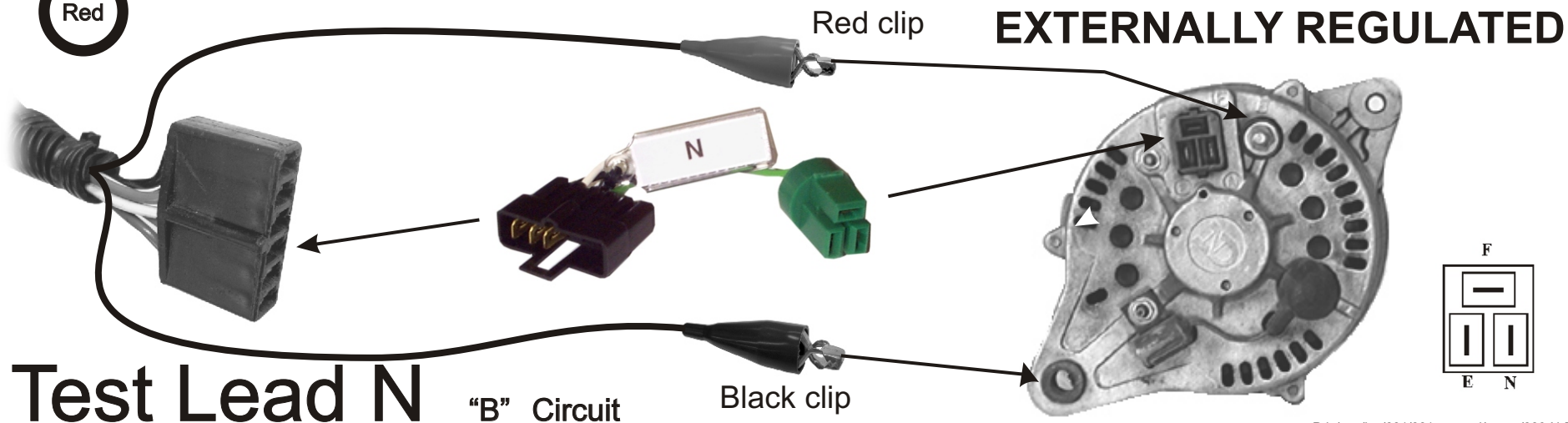
Blue

Green

Red

Many alternators use the same plug with different wiring. Please refer to test lead chart for the correct test lead requirements!

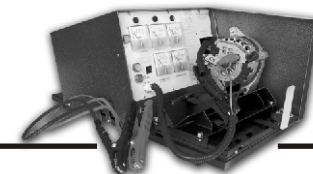
1. Readings for a good alternator are in the shaded area. All meter readings are $\pm 5\%$.
2. Insert lead as shown below and slide alternator onto alternator holder pin.
3. Install the belt making sure it is under the belt retaining clip. Slide the green handle to the right, locking handle into retaining tab and close the belt guard. Make sure to keep your fingers and clothing free of the pulley and belt.
4. Turn on motor switch. The charge light on the panel should be lit. If not, check and reset the circuit breaker on the front panel.
5. Press the GREEN test button. While pressing button, observe meters for proper readings. Hold for no more than 10 seconds.





881 Alternator and Starter Test Bench

Test Leads



BAD DIODE LIGHT



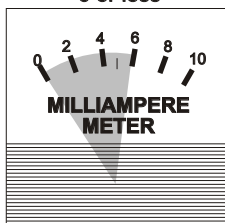
CHARGE LIGHT



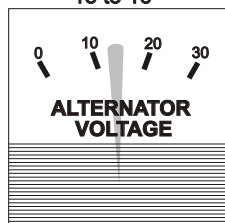
AUXILIARY LIGHT



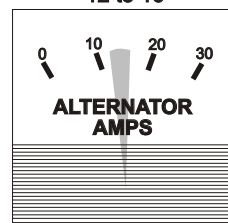
MILLIAMPERE METER
6 or less



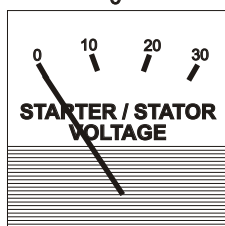
ALTERNATOR VOLTAGE
13 to 16



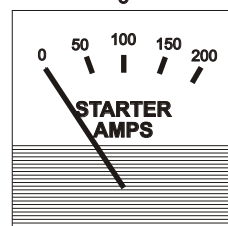
ALTERNATOR AMPERAGE
12 to 16



STARTER VOLTAGE
STATOR VOLTAGE
0



STARTER AMPERAGE
0



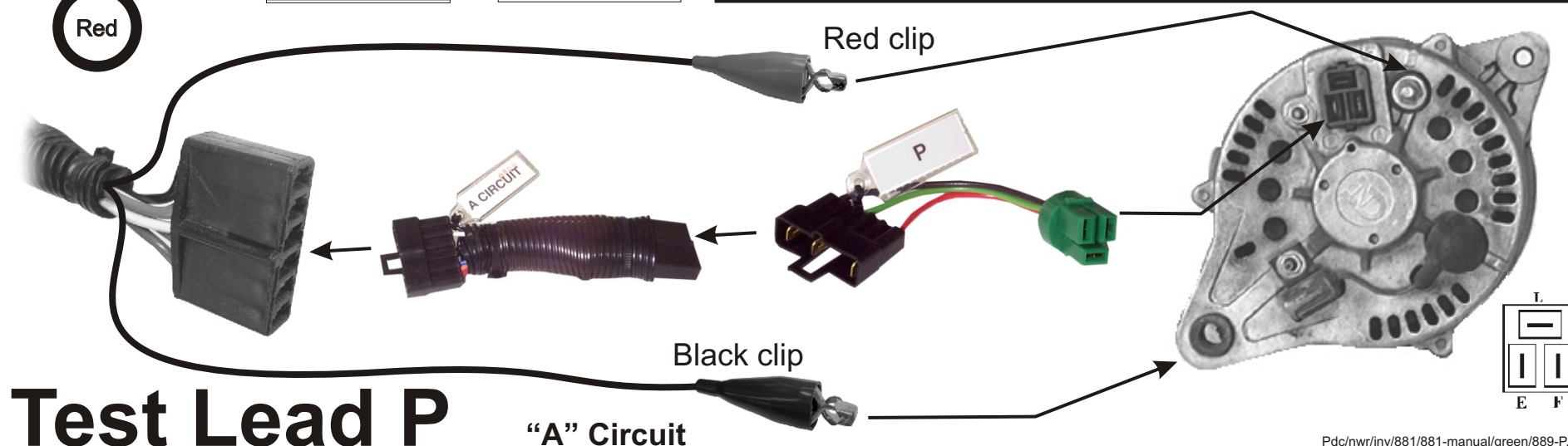
Blue

Green

Red

Many alternators use the same plug with different wiring. Please refer to test lead chart for the correct test lead requirements!

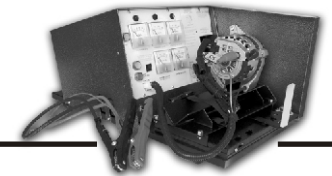
1. Readings for a good alternator are in the shaded area. All meter readings are $\pm 5\%$.
2. Insert lead as shown below and slide alternator onto alternator holder pin. Make sure "A" circuit adapter is connected.
3. Install the belt making sure it is under the belt retaining clip. Slide the green handle to the right, locking handle into retaining tab and close the belt guard. Make sure to keep your fingers and clothing free of the pulley and belt.
4. Turn on motor switch. The charge light on the panel should be lit. If not, check and reset the circuit breaker on the front panel.
5. Press the GREEN test button **MOMENTARILY** and **RELEASE**. Observe meters for proper readings. Hold for no more than 3 seconds.





881 Alternator and Starter Test Bench

Test Leads



BAD DIODE LIGHT



CHARGE LIGHT



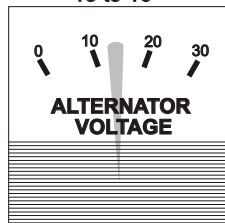
AUXILIARY LIGHT



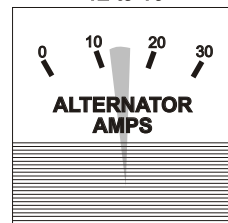
MILLIAMPERE METER
6 or less



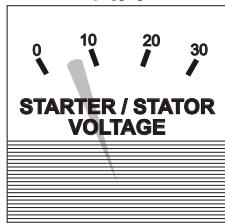
ALTERNATOR VOLTAGE
13 to 16



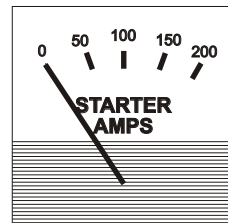
ALTERNATOR AMPERAGE
12 to 16



STARTER VOLTAGE
STATOR VOLTAGE
7 to 8



STARTER AMPERAGE
0



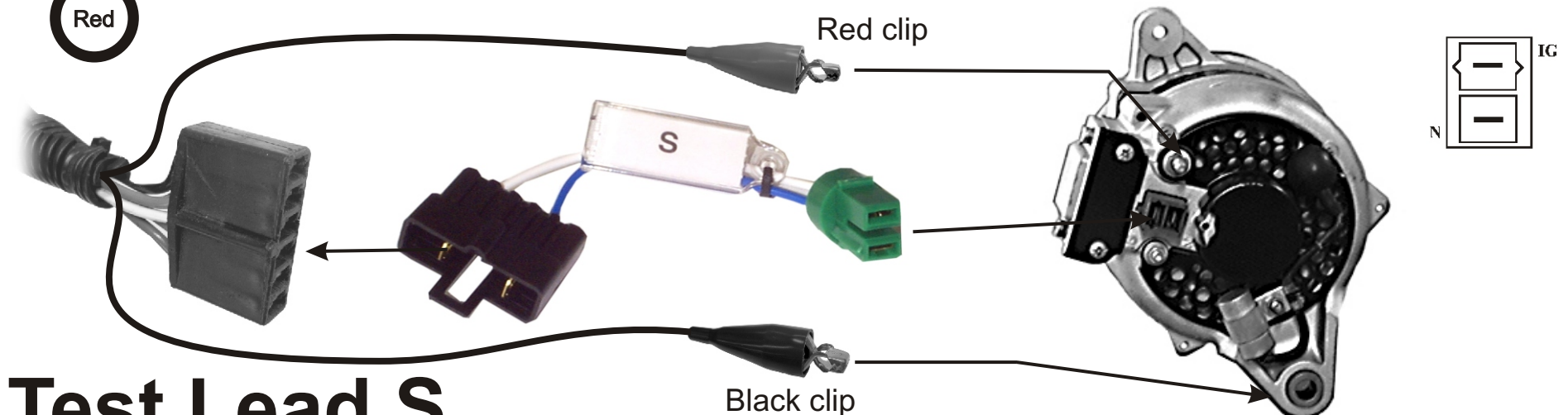
Blue

Green

Red

Many alternators use the same plug with different wiring. Please refer to test lead chart for the correct test lead requirements!

1. Readings for a good alternator are in the shaded area. All meter readings are $\pm 5\%$.
2. Insert lead as shown below and slide alternator onto alternator holder pin.
3. Install the belt making sure it is under the belt retaining clip. Slide the green handle to the right, locking handle into retaining tab and close the belt guard. Make sure to keep your fingers and clothing free of the pulley and belt.
4. Turn on motor switch. The charge light on the panel should be lit. If not, check and reset the circuit breaker on the front panel.
5. Press the GREEN test button **MOMENTARILY** and **RELEASE**. Observe meters for proper readings. Hold for no more than 3 seconds.

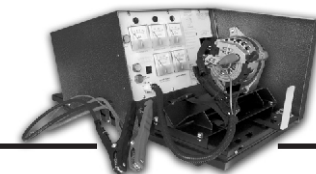


Test Lead S



881 Alternator and Starter Test Bench

Test Leads



BAD DIODE LIGHT



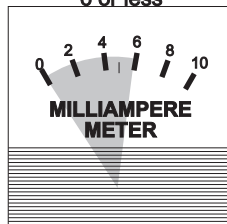
CHARGE LIGHT



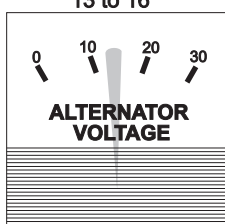
AUXILIARY LIGHT



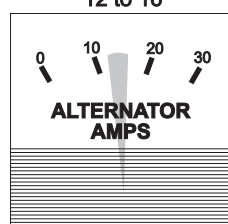
MILLIAMPERE METER
6 or less



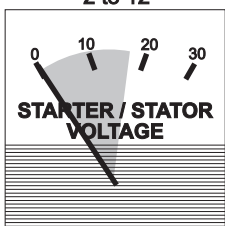
ALTERNATOR VOLTAGE
13 to 16



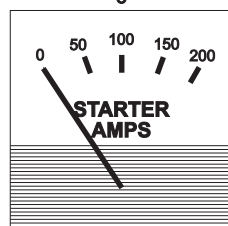
ALTERNATOR AMPERAGE
12 to 16



STARTER VOLTAGE
STATOR VOLTAGE
2 to 12



STARTER AMPERAGE
0



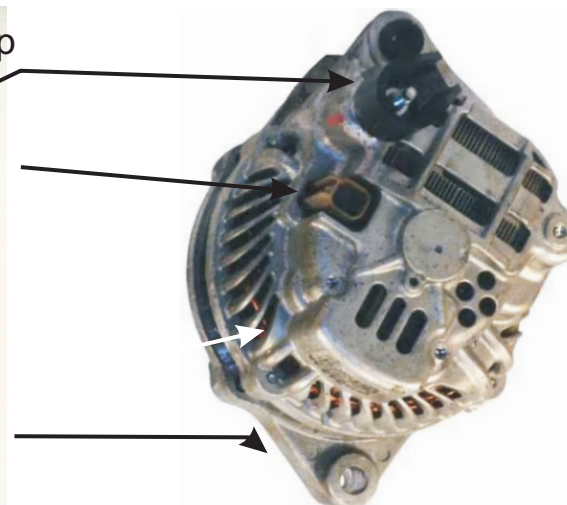
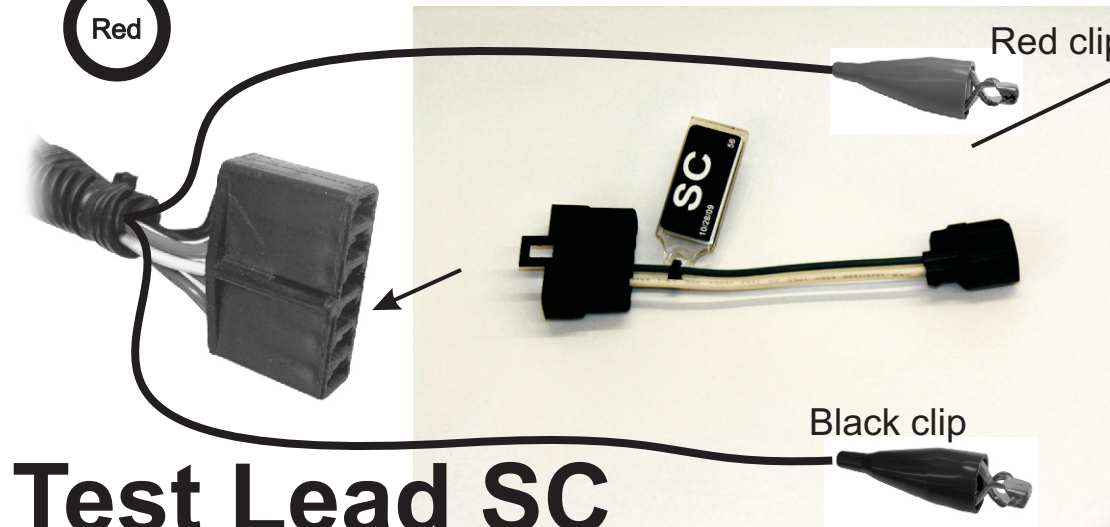
Blue

Green

Red

Many alternators use the same plug with different wiring. Please refer to test lead chart for the correct test lead requirements!

1. Readings for a good alternator are in the shaded area. All meter readings are $\pm 5\%$.
2. Insert lead as shown below and slide alternator onto alternator holder pin.
3. Install the belt making sure it is under the belt retaining clip. Slide the green handle to the right, locking handle into retaining tab and close the belt guard. Make sure to keep your fingers and clothing free of the pulley and belt.
4. Turn on motor switch. The charge light on the panel should be lit. If not, check and reset the circuit breaker on the front panel.
5. Press the GREEN test button. While pressing button, observe meters for proper readings. Hold for no more than 10 seconds.

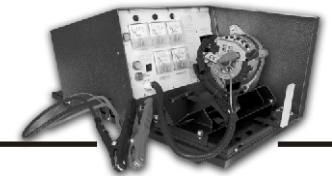


**EXTERNALLY
REGULATED**



881 Alternator and Starter Test Bench

Test Leads



BAD DIODE LIGHT



CHARGE LIGHT



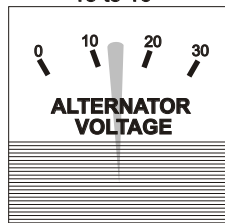
AUXILIARY LIGHT



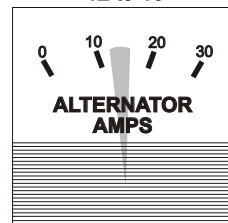
MILLIAMPERE METER
6 or less



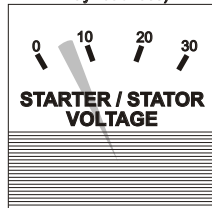
ALTERNATOR VOLTAGE
13 to 16



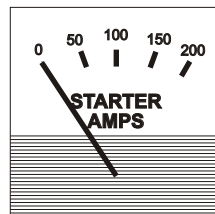
ALTERNATOR AMPERAGE
12 to 16



STARTER VOLTAGE
STATOR VOLTAGE
6 to 8
(some Cadillac alternators
may read less)



STARTER AMPERAGE
0



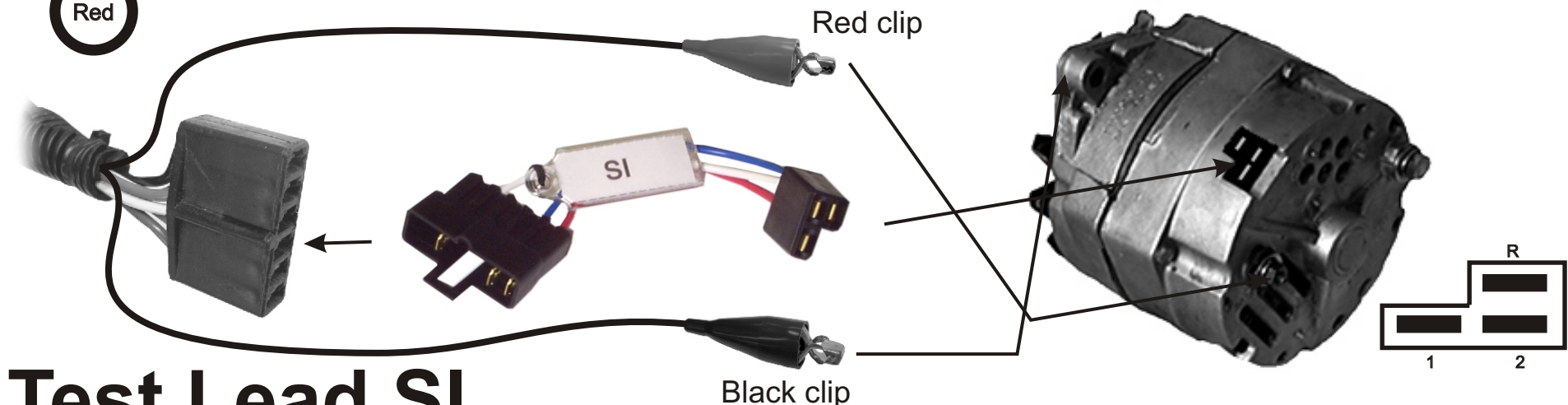
Blue

Green

Red

Many alternators use the same plug with different wiring. Please refer to test lead chart for the correct test lead requirements!

1. Readings for a good alternator are in the shaded area. All meter readings are $\pm 5\%$.
2. Insert lead as shown below and slide alternator onto alternator holder pin.
3. Install the belt making sure it is under the belt retaining clip. Slide the green handle to the right, locking handle into retaining tab and close the belt guard. Make sure to keep your fingers and clothing free of the pulley and belt.
4. Turn on motor switch. The charge light on the panel should be lit. If not, check and reset the circuit breaker on the front panel.
5. Press the GREEN test button **MOMENTARILY** and **RELEASE**. Observe meters for proper readings. Hold for no more than 3 seconds.

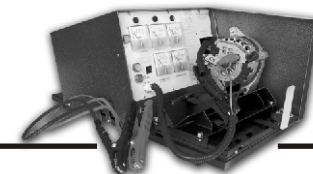


Test Lead SI



881 Alternator and Starter Test Bench

Test Leads



BAD DIODE LIGHT



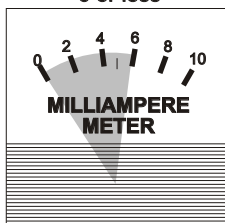
CHARGE LIGHT



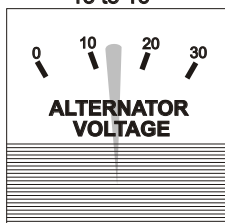
AUXILIARY LIGHT



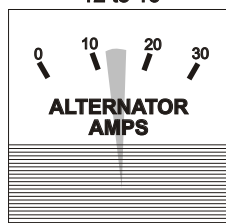
MILLIAMPERE METER
6 or less



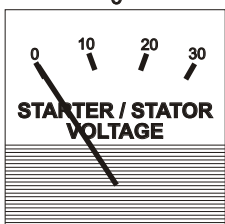
ALTERNATOR VOLTAGE
13 to 16



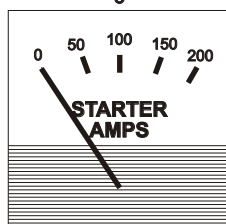
ALTERNATOR AMPERAGE
12 to 16



STARTER VOLTAGE
STATOR VOLTAGE
0



STARTER AMPERAGE
0



Blue

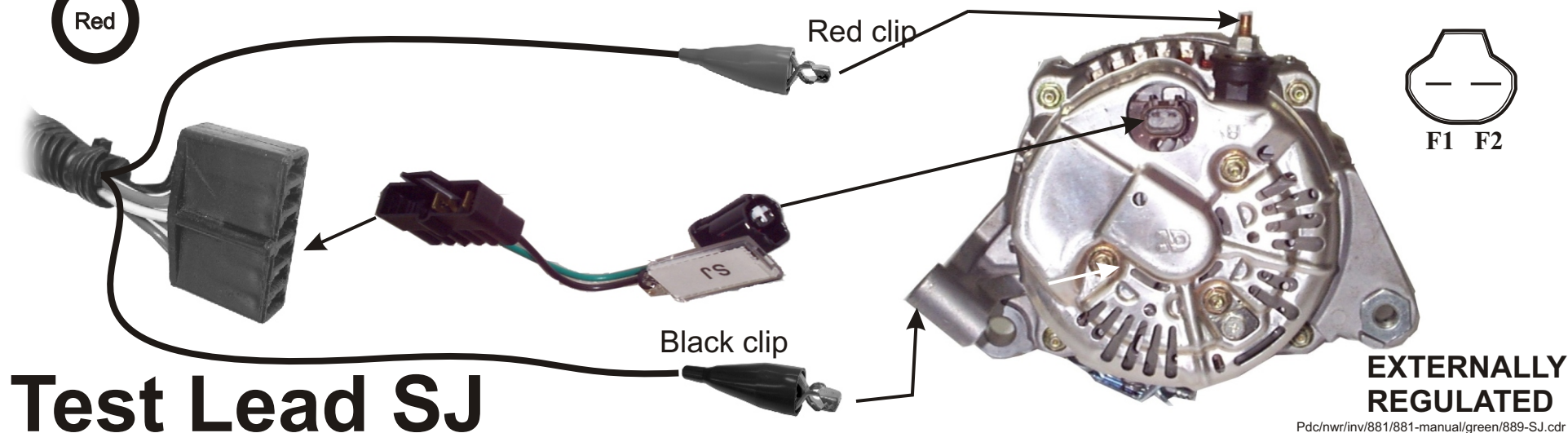
Green

Red



Many alternators use the same plug with different wiring. Please refer to test lead chart for the correct test lead requirements!

1. Readings for a good alternator are in the shaded area. All meter readings are $\pm 5\%$.
2. Insert lead as shown below and slide alternator onto alternator holder pin.
3. Install the belt making sure it is under the belt retaining clip. Slide the green handle to the right, locking handle into retaining tab and close the belt guard. Make sure to keep your fingers and clothing free of the pulley and belt.
4. Turn on motor switch. The charge light on the panel should be lit. If not, check and reset the circuit breaker on the front panel.
5. Press the GREEN test button. While pressing button, observe meters for proper readings. Hold for no more than 10 seconds.

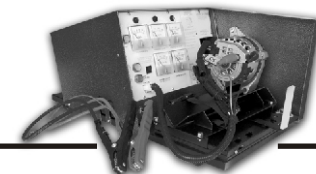


**EXTERNALLY
REGULATED**



881 Alternator and Starter Test Bench

Test Leads



BAD DIODE LIGHT



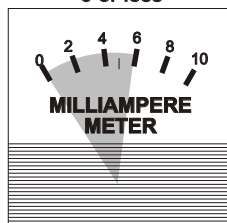
CHARGE LIGHT



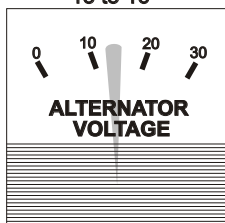
AUXILIARY LIGHT



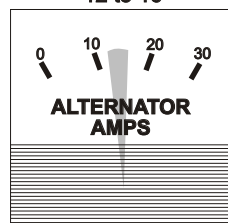
MILLIAMPERE METER
6 or less



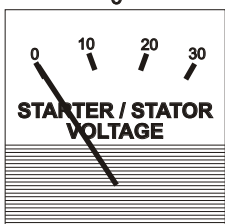
ALTERNATOR VOLTAGE
13 to 16



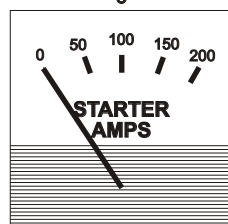
ALTERNATOR AMPERAGE
12 to 16



STARTER VOLTAGE
STATOR VOLTAGE
0



STARTER AMPERAGE
0



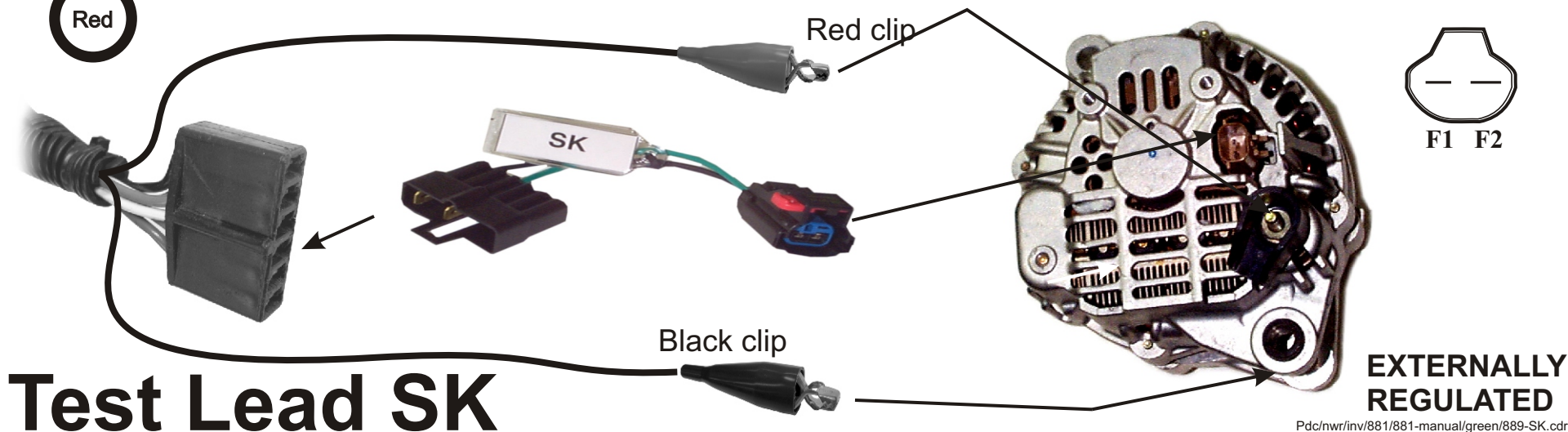
Blue

Green

Red

Many alternators use the same plug with different wiring. Please refer to test lead chart for the correct test lead requirements!

1. Readings for a good alternator are in the shaded area. All meter readings are $\pm 5\%$.
2. Insert lead as shown below and slide alternator onto alternator holder pin.
3. Install the belt making sure it is under the belt retaining clip. Slide the green handle to the right, locking handle into retaining tab and close the belt guard. Make sure to keep your fingers and clothing free of the pulley and belt.
4. Turn on motor switch. The charge light on the panel should be lit. If not, check and reset the circuit breaker on the front panel.
5. Press the GREEN test button. While pressing button, observe meters for proper readings. Hold for no more than 10 seconds.

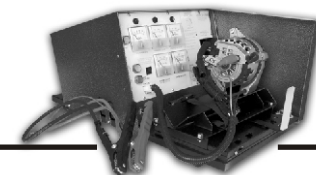


**EXTERNALLY
REGULATED**



881 Alternator and Starter Test Bench

Test Leads



BAD DIODE LIGHT



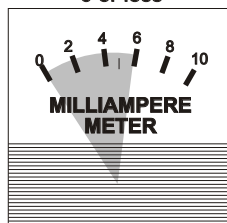
CHARGE LIGHT



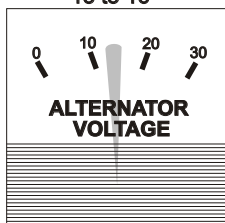
AUXILIARY LIGHT



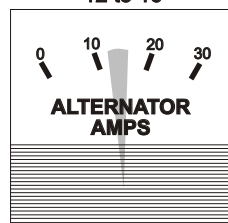
MILLIAMPERE METER
6 or less



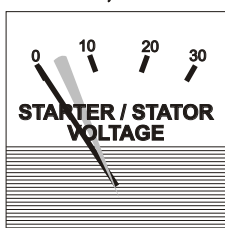
ALTERNATOR VOLTAGE
13 to 16



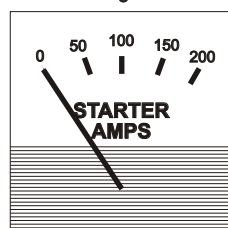
ALTERNATOR AMPERAGE
12 to 16



STARTER VOLTAGE
STATOR VOLTAGE
0, unless P
connected, then 7 to 8



STARTER AMPERAGE
0



Blue

Green

Red



Many alternators use the same plug with different wiring. Please refer to test lead chart for the correct test lead requirements!

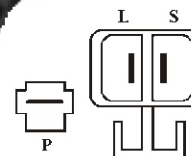
1. Readings for a good alternator are in the shaded area. All meter readings are $\pm 5\%$.
2. Insert lead as shown below and slide alternator onto alternator holder pin.
3. Install the belt making sure it is under the belt retaining clip. Slide the green handle to the right, locking handle into retaining tab and close the belt guard. Make sure to keep your fingers and clothing free of the pulley and belt.
4. Turn on motor switch. The charge light on the panel should be lit. If not, check and reset the circuit breaker on the front panel.
5. Press the GREEN test button **MOMENTARILY** and **RELEASE**. Observe meters for proper readings. Hold for no more than 3 seconds.

Red clip

"P" terminal, connected
only when P spade is present
on alternator

Black clip

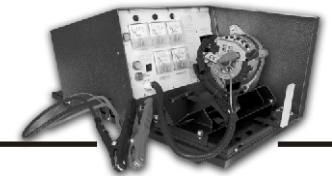
Test Lead SL





881 Alternator and Starter Test Bench

Test Leads



BAD DIODE LIGHT



CHARGE LIGHT



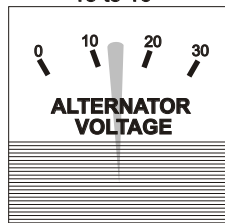
AUXILIARY LIGHT



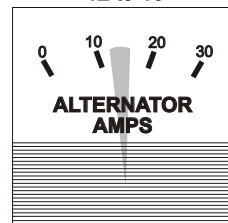
MILLIAMPERE METER
6 or less



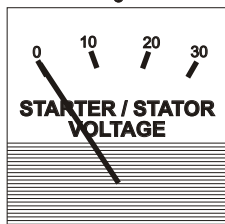
ALTERNATOR VOLTAGE
13 to 16



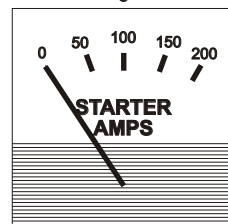
ALTERNATOR AMPERAGE
12 to 16



STARTER VOLTAGE
STATOR VOLTAGE
0



STARTER AMPERAGE
0



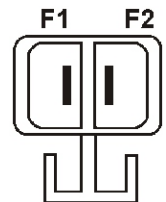
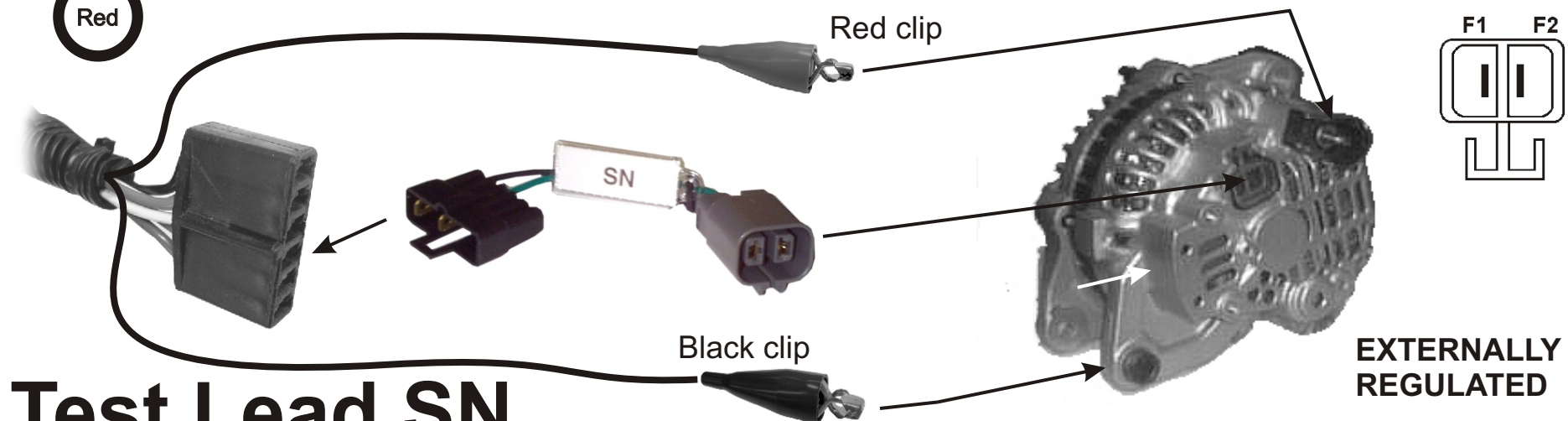
Blue

Green

Red

Many alternators use the same plug with different wiring. Please refer to test lead chart for the correct test lead requirements!

1. Readings for a good alternator are in the shaded area. All meter readings are $\pm 5\%$.
2. Insert lead as shown below and slide alternator onto alternator holder pin.
3. Install the belt making sure it is under the belt retaining clip. Slide the green handle to the right, locking handle into retaining tab and close the belt guard. Make sure to keep your fingers and clothing free of the pulley and belt.
4. Turn on motor switch. The charge light on the panel should be lit. If not, check and reset the circuit breaker on the front panel.
5. Press the GREEN test button. While pressing button, observe meters for proper readings. Hold for no more than 10 seconds.



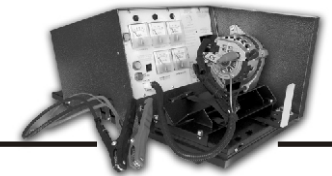
**EXTERNALLY
REGULATED**

Test Lead SN



881 Alternator and Starter Test Bench

Test Leads



BAD DIODE LIGHT



CHARGE LIGHT



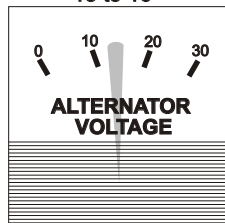
AUXILIARY LIGHT



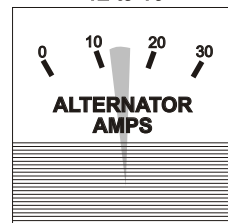
MILLIAMPERE METER
6 or less



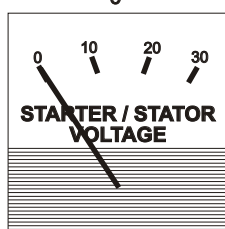
ALTERNATOR VOLTAGE
13 to 16



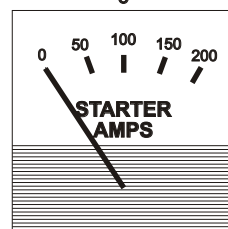
ALTERNATOR AMPERAGE
12 to 16



STARTER VOLTAGE
STATOR VOLTAGE
0



STARTER AMPERAGE
0



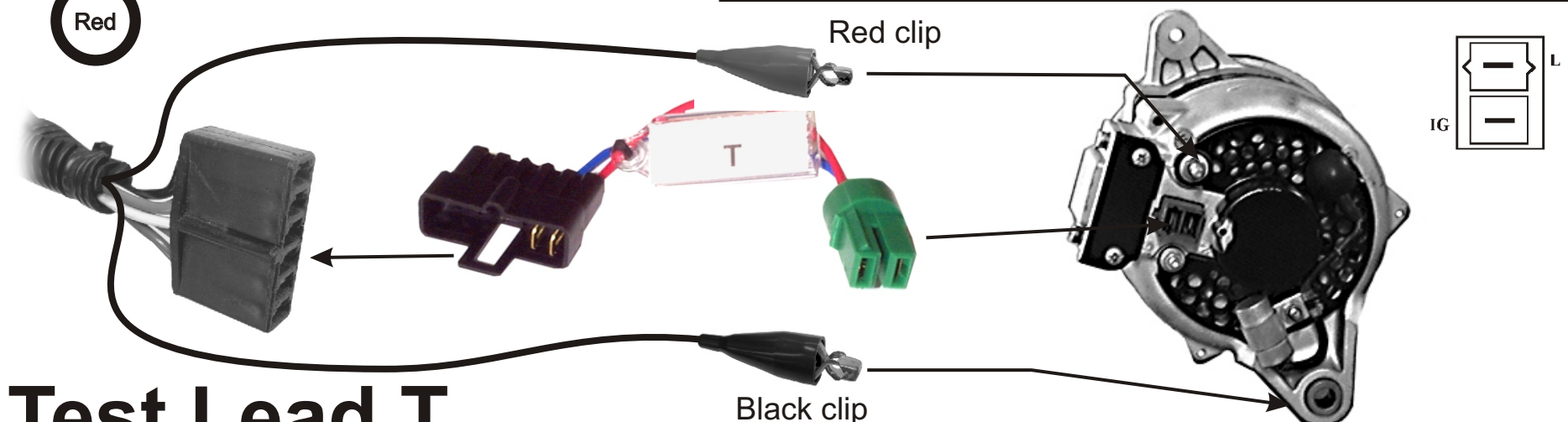
Blue

Green

Red

Many alternators use the same plug with different wiring. Please refer to test lead chart for the correct test lead requirements!

1. Readings for a good alternator are in the shaded area. All meter readings are $\pm 5\%$.
2. Insert lead as shown below and slide alternator onto alternator holder pin.
3. Install the belt making sure it is under the belt retaining clip. Slide the green handle to the right, locking handle into retaining tab and close the belt guard. Make sure to keep your fingers and clothing free of the pulley and belt.
4. Turn on motor switch. The charge light on the panel should be lit. If not, check and reset the circuit breaker on the front panel.
5. Press the GREEN test button **MOMENTARILY** and **RELEASE**. Observe meters for proper readings. Hold for no more than 3 seconds.

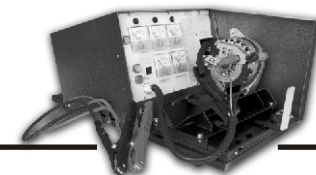


Test Lead T



881 Alternator and Starter Test Bench

Test Leads



BAD DIODE LIGHT



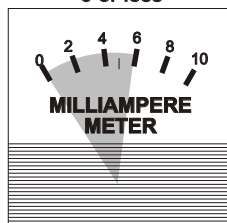
CHARGE LIGHT



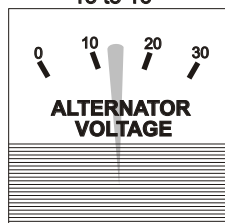
AUXILIARY LIGHT



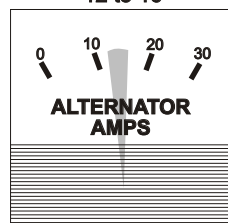
MILLIAMPERE METER
6 or less



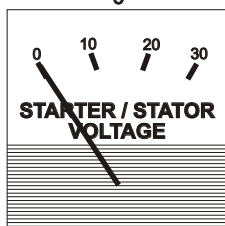
ALTERNATOR VOLTAGE
13 to 16



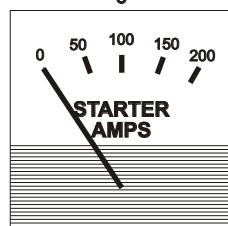
ALTERNATOR AMPERAGE
12 to 16



STARTER VOLTAGE
STATOR VOLTAGE
0



STARTER AMPERAGE
0



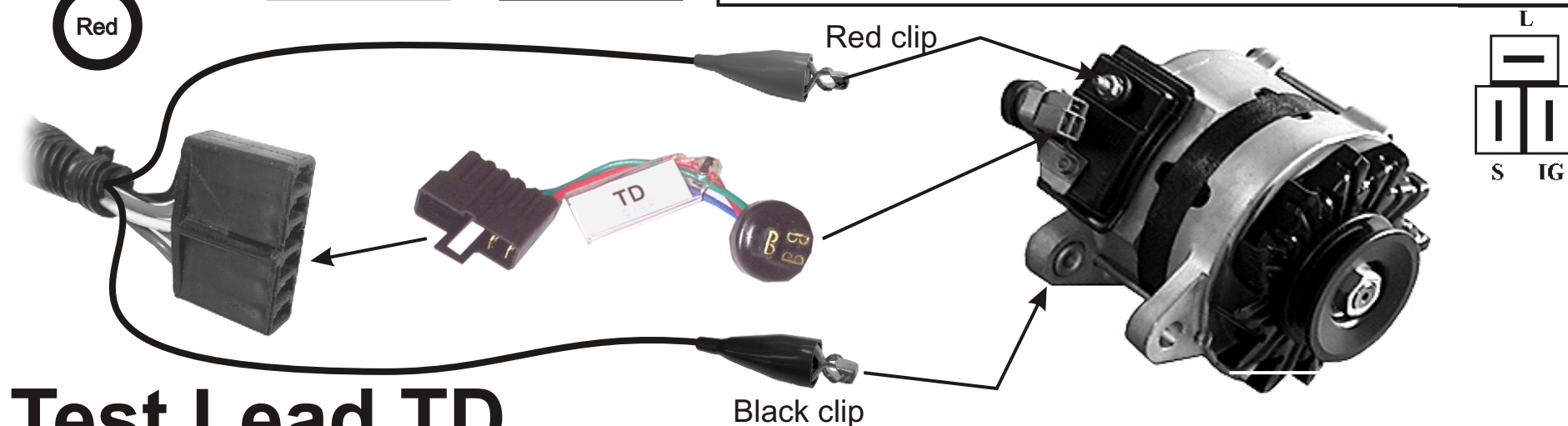
Blue

Green

Red

Many alternators use the same plug with different wiring. Please refer to test lead chart for the correct test lead requirements!

1. Readings for a good alternator are in the shaded area. All meter readings are $\pm 5\%$.
2. Insert lead as shown below and slide alternator onto alternator holder pin.
3. Install the belt making sure it is under the belt retaining clip. Slide the green handle to the right, locking handle into retaining tab and close the belt guard. Make sure to keep your fingers and clothing free of the pulley and belt.
4. Turn on motor switch. The charge light on the panel should be lit. If not, check and reset the circuit breaker on the front panel.
5. Press the GREEN test button **MOMENTARILY** and **RELEASE**. Observe meters for proper readings. Hold for no more than 3 seconds.

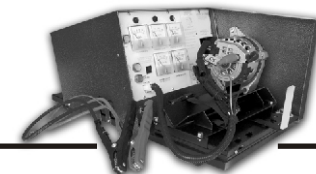


Test Lead TD



881 Alternator and Starter Test Bench

Test Leads



BAD DIODE LIGHT



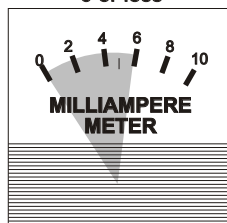
CHARGE LIGHT



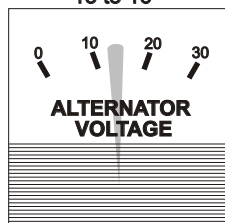
AUXILIARY LIGHT



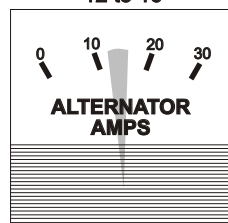
MILLIAMPERE METER
6 or less



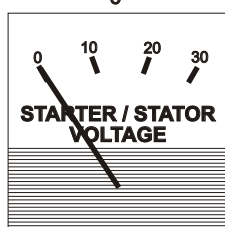
ALTERNATOR VOLTAGE
13 to 16



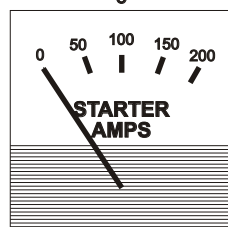
ALTERNATOR AMPERAGE
12 to 16



STARTER VOLTAGE
STATOR VOLTAGE
0



STARTER AMPERAGE
0



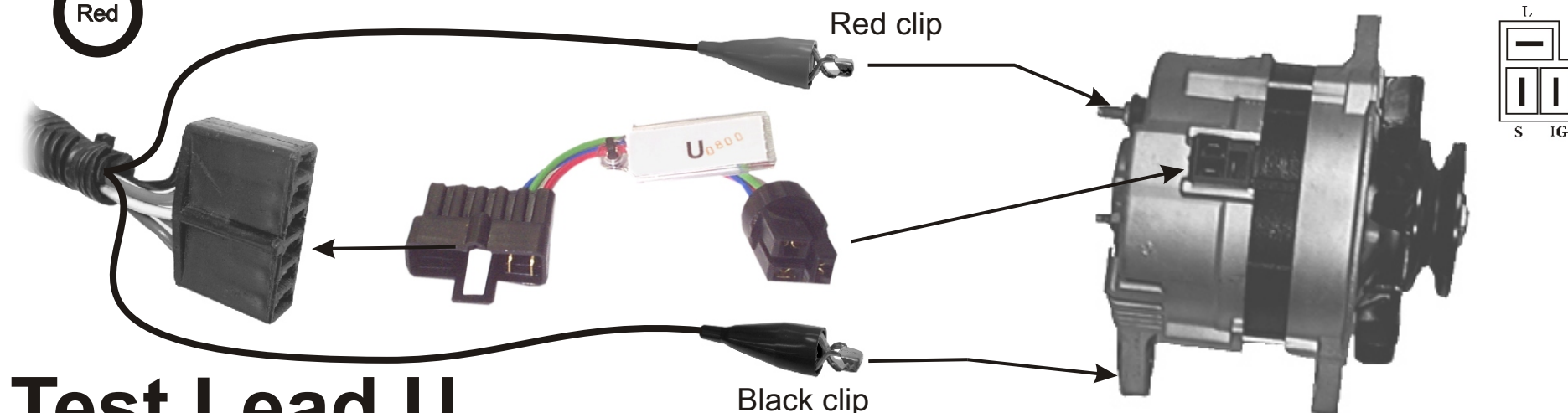
Blue

Green

Red

Many alternators use the same plug with different wiring. Please refer to test lead chart for the correct test lead requirements!

1. Readings for a good alternator are in the shaded area. All meter readings are $\pm 5\%$.
2. Insert lead as shown below and slide alternator onto alternator holder pin.
3. Install the belt making sure it is under the belt retaining clip. Slide the green handle to the right, locking handle into retaining tab and close the belt guard. Make sure to keep your fingers and clothing free of the pulley and belt.
4. Turn on motor switch. The charge light on the panel should be lit. If not, check and reset the circuit breaker on the front panel.
5. Press the GREEN test button **MOMENTARILY** and **RELEASE**. Observe meters for proper readings. Hold for no more than 3 seconds.

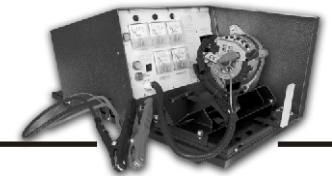


Test Lead U



881 Alternator and Starter Test Bench

Test Leads



BAD DIODE LIGHT



CHARGE LIGHT



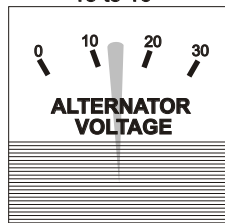
AUXILIARY LIGHT



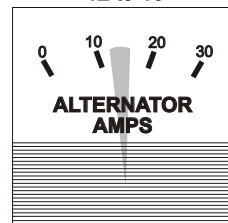
MILLIAMPERE METER
6 or less



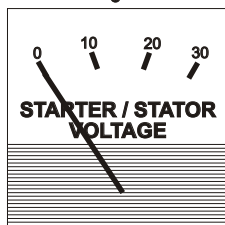
ALTERNATOR VOLTAGE
13 to 16



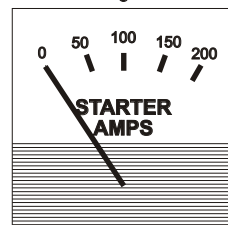
ALTERNATOR AMPERAGE
12 to 16



STARTER VOLTAGE
STATOR VOLTAGE
0



STARTER AMPERAGE
0



Blue

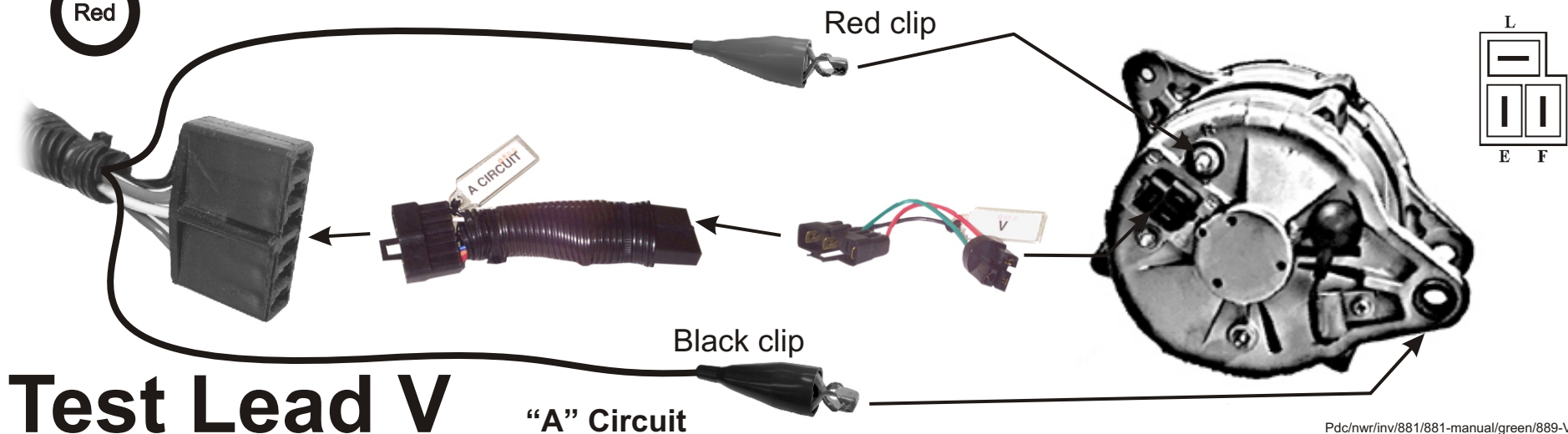
Green

Red



Many alternators use the same plug with different wiring. Please refer to test lead chart for the correct test lead requirements!

1. Readings for a good alternator are in the shaded area. All meter readings are $\pm 5\%$.
2. Insert lead as shown below and slide alternator onto alternator holder pin. Make sure "A" circuit adapter is connected.
3. Install the belt making sure it is under the belt retaining clip. Slide the green handle to the right, locking handle into retaining tab and close the belt guard. Make sure to keep your fingers and clothing free of the pulley and belt.
4. Turn on motor switch. The charge light on the panel should be lit. If not, check and reset the circuit breaker on the front panel.
5. Press the GREEN test button **MOMENTARILY** and **RELEASE**. Observe meters for proper readings. Hold for no more than 3 seconds.



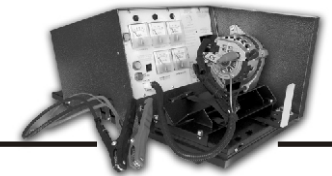
Test Lead V

"A" Circuit



881 Alternator and Starter Test Bench

Test Leads



BAD DIODE LIGHT



CHARGE LIGHT



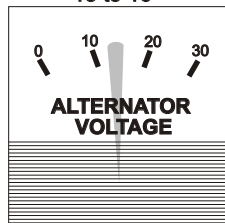
AUXILIARY LIGHT



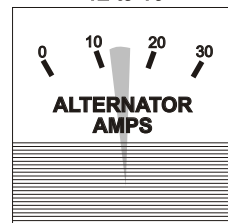
MILLIAMPERE METER
6 or less



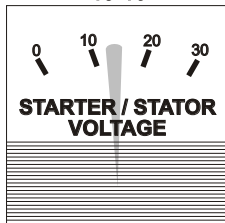
ALTERNATOR VOLTAGE
13 to 16



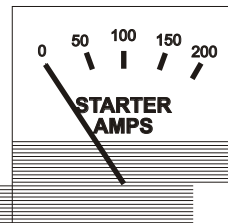
ALTERNATOR AMPERAGE
12 to 16



STARTER VOLTAGE
STATOR VOLTAGE
13-16



STARTER AMPERAGE
0



Blue

Green

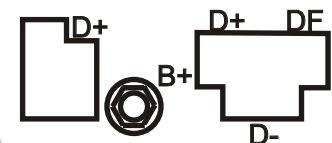
Red

Many alternators use the same plug with different wiring. Please refer to test lead chart for the correct test lead requirements!

1. Readings for a good alternator are in the shaded area. All meter readings are $\pm 5\%$.
2. Insert lead as shown below and slide alternator onto alternator holder pin.
3. Install the belt making sure it is under the belt retaining clip. Slide the green handle to the right, locking handle into retaining tab and close the belt guard. Make sure to keep your fingers and clothing free of the pulley and belt.
4. Turn on motor switch. The charge light on the panel should be lit. If not, check and reset the circuit breaker on the front panel.
5. Press the GREEN test button. While pressing button, observe meters for proper readings. Hold for no more than 10 seconds.

Red clip

Black clip



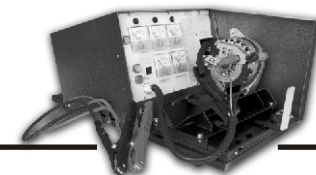
Test Lead VO

**EXTERNALLY
REGULATED**



881 Alternator and Starter Test Bench

Test Leads



BAD DIODE LIGHT



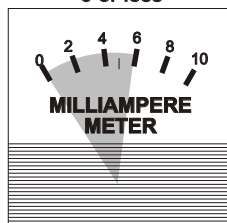
CHARGE LIGHT



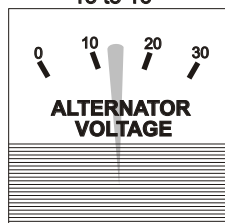
AUXILIARY LIGHT



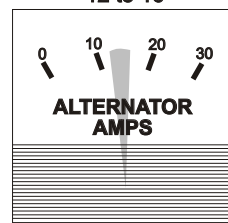
MILLIAMPERE METER
6 or less



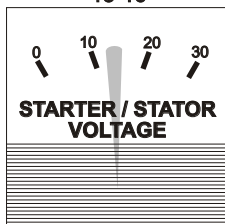
ALTERNATOR VOLTAGE
13 to 16



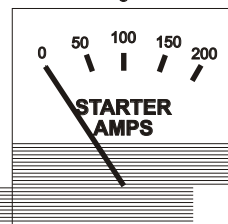
ALTERNATOR AMPERAGE
12 to 16



STARTER VOLTAGE
STATOR VOLTAGE
13-16



STARTER AMPERAGE
0



Blue

Green

Red

Many alternators use the same plug with different wiring. Please refer to test lead chart for the correct test lead requirements!

1. Readings for a good alternator are in the shaded area. All meter readings are $\pm 5\%$.
2. Insert lead as shown below and slide alternator onto alternator holder pin.
3. Install the belt making sure it is under the belt retaining clip. Slide the green handle to the right, locking handle into retaining tab and close the belt guard. Make sure to keep your fingers and clothing free of the pulley and belt.
4. Turn on motor switch. The charge light on the panel should be lit. If not, check and reset the circuit breaker on the front panel.
5. Press the GREEN test button. While pressing button, observe meters for proper readings. Hold for no more than 10 seconds.

Red clip

Black clip

D- I _ IDF
D+ BAT

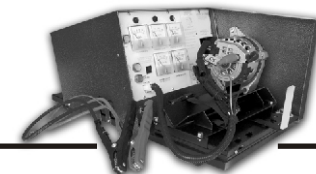
**EXTERNALLY
REGULATED**

Test Lead VW



881 Alternator and Starter Test Bench

Test Leads



BAD DIODE LIGHT



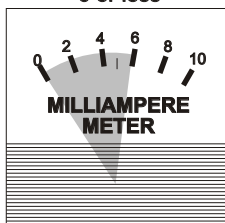
CHARGE LIGHT



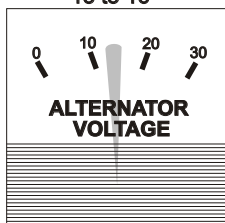
AUXILIARY LIGHT



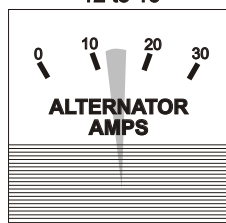
MILLIAMPERE METER
6 or less



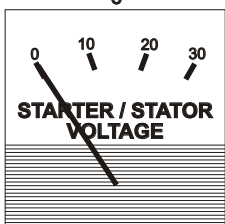
ALTERNATOR VOLTAGE
13 to 16



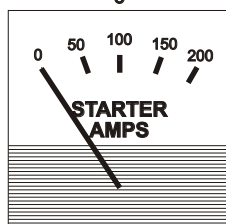
ALTERNATOR AMPERAGE
12 to 16



STARTER VOLTAGE
STATOR VOLTAGE
0



STARTER AMPERAGE
0



Blue

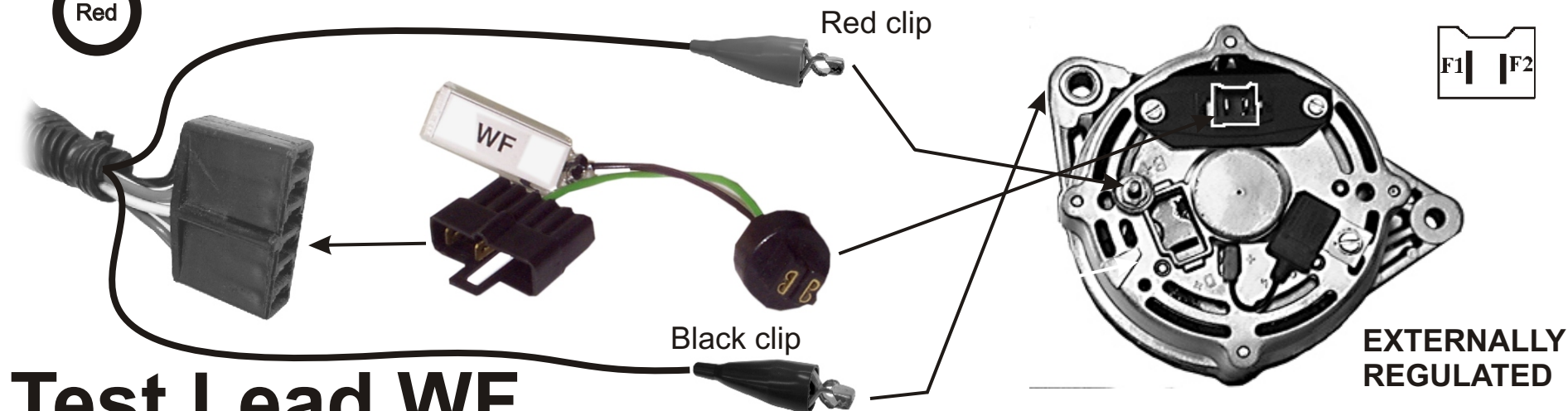
Green

Red



Many alternators use the same plug with different wiring. Please refer to test lead chart for the correct test lead requirements!

1. Readings for a good alternator are in the shaded area. All meter readings are $\pm 5\%$.
2. Insert lead as shown below and slide alternator onto alternator holder pin.
3. Install the belt making sure it is under the belt retaining clip. Slide the green handle to the right, locking handle into retaining tab and close the belt guard. Make sure to keep your fingers and clothing free of the pulley and belt.
4. Turn on motor switch. The charge light on the panel should be lit. If not, check and reset the circuit breaker on the front panel.
5. Press the GREEN test button. While pressing button, observe meters for proper readings. Hold for no more than 10 seconds.



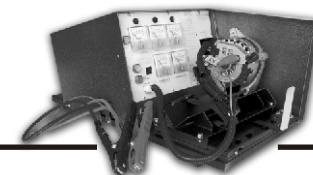
Test Lead WF

**EXTERNALLY
REGULATED**



881 Alternator and Starter Test Bench

Test Leads



BAD DIODE LIGHT



CHARGE LIGHT



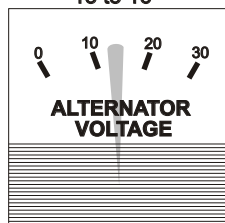
AUXILIARY LIGHT



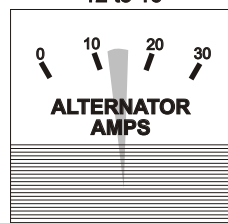
MILLIAMPERE METER
6 or less



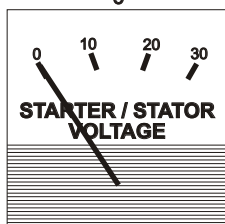
ALTERNATOR VOLTAGE
13 to 16



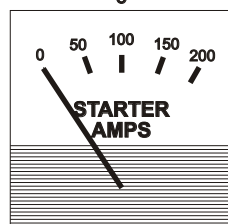
ALTERNATOR AMPERAGE
12 to 16



STARTER VOLTAGE
STATOR VOLTAGE
0



STARTER AMPERAGE
0



Blue

Green

Red

Many alternators use the same plug with different wiring. Please refer to test lead chart for the correct test lead requirements!

1. Readings for a good alternator are in the shaded area. All meter readings are $\pm 5\%$.
2. Insert lead as shown below and slide alternator onto alternator holder pin.
3. Install the belt making sure it is under the belt retaining clip. Slide the green handle to the right, locking handle into retaining tab and close the belt guard. Make sure to keep your fingers and clothing free of the pulley and belt.
4. Turn on motor switch. The charge light on the panel should be lit. If not, check and reset the circuit breaker on the front panel.
5. Press the GREEN test button. While pressing button, observe meters for proper readings. Hold for no more than 10 seconds.

